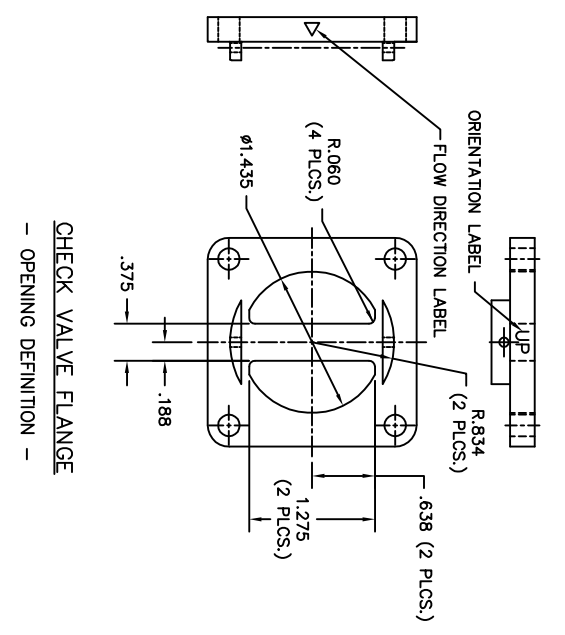
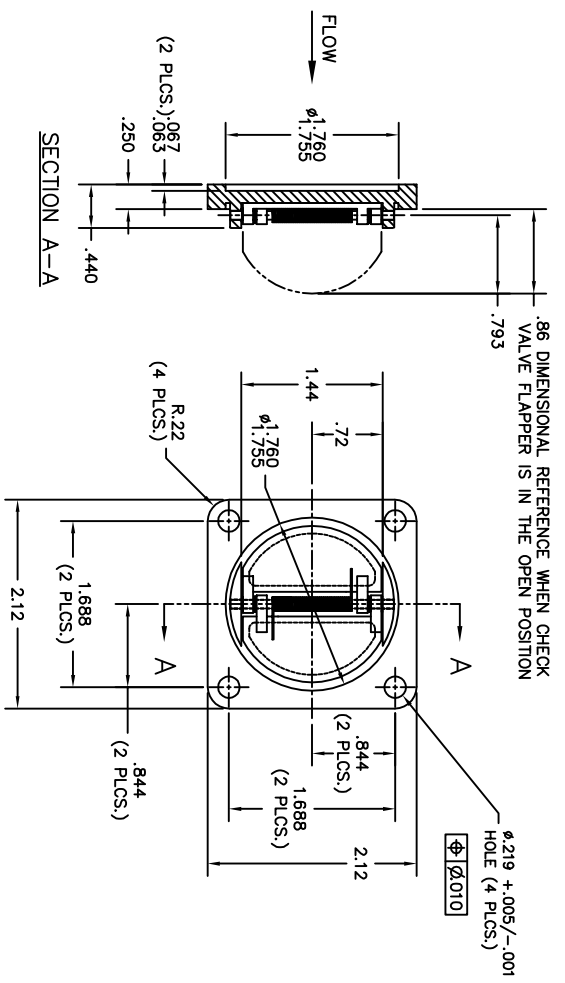


NOTICE - This drawing is a part of the proprietary article therein disclosed and its design, manufacturing, production, use, sale, or distribution is the property of Aero Space Controls Corporation, Wichita, Kansas. It is submitted under a non-disclosure agreement and its use, reproduction, or distribution is prohibited without the express written consent of Aero Space Controls Corporation. It is not to be disclosed to any unauthorized person or incorporated in any other projects.



NOTES CONTINUED:

7. INTENDED APPLICATION FOR CHECK VALVE ASSEMBLY: HOT ENGINE BLEED AIR

8. LIST OF CHECK VALVE ASSEMBLY COMPONENT MATERIALS AND FINISHES:
 -CHECK VALVE FLANGE AND BUTTERFLY FLAPS:
 MATERIAL: 304 STAINLESS STEEL PER MIL-S-5059
 FINISH: PASSIVATE PER QQ-P-35 TYPE II

-CHECK VALVE PIN MATERIAL: DRILL ROD STEEL
 FINISH: CAD PLATE TYPE I

-SPRING MATERIAL: 17-7 PH

9. FOR ASSEMBLY SEE ASC DRAWING 6004A501

| QTY. | ITEM SIZE | PART NUMBER | CHECK VALVE | DESCRIPTION | MATERIAL | MAT'L. SPEC. | FINISH | FINISH SPEC. |
|------|-----------|-------------|-------------|-------------|----------|--------------|--------|--------------|
| | | -1 | | | | | | |

| DIMENSIONAL SYMBOLS PER ASME Y14.5 | | UNLESS OTHERWISE SPECIFIED | | LIST OF MATERIALS | | TITLE | |
|------------------------------------|----------------------------------|---|----------------------|----------------------------------|---------|---------|--|
| ∠ | FLATNESS | 1. DIMENSIONS ARE IN INCHES | TOLERANCES ON ANGLES | DR. | D. ORTH | DATE | AERO SPACE CONTROLS CORPORATION WICHITA, KANSAS CHECK VALVE - BLEED AIR - |
| - | STRAIGHTNESS | FRACTIONS ± 1/16 | 40° TO 50° | CHK. | | 1-16-06 | |
| ⊥ | ANGULARITY | XX DEC ±.030 | DRILL HOLES | ENGR. | | | |
| ⊥ | PERPENDICULARITY | XXX DEC ±.010 | AND 10.387 | APPD. S. AXTELL | | 1-17-06 | |
| // | PARALLELISM | 2. SURFACE ROUGHNESS | PER MIL-STD-10 | NEXT | | | |
| ⊙ | CONCENTRICITY | 3. REMOVE BURRS & BREAK SHARP EDGES .010 MAX. | | ASSY. | | | |
| ⊕ | TRUE POSITION | 4. INTERNAL RADII .005 TO .015 | | | | | |
| ⊖ | CIRCULARITY (ROUNDNESS) | | | | | | |
| ⊖ | SYMMETRY | | | | | | |
| Ⓜ | (MMC) MAXIMUM MATERIAL CONDITION | 5. STRAIGHT SCREW MIL-S-7742 | THREADS | | | | |
| Ⓟ | (RFS) REGARDLESS OF FEATURE SIZE | TAPERED PIPE MIL-P-7105 | | | | | |
| | | | | 6. ALL DIMENSIONS BEFORE PLATING | | | |
| | | DO NOT SCALE DRAWING | | | | | |
| | | SCALE 1:1 | UNIT WT | LBS | SHT 1 | OF 1 | |