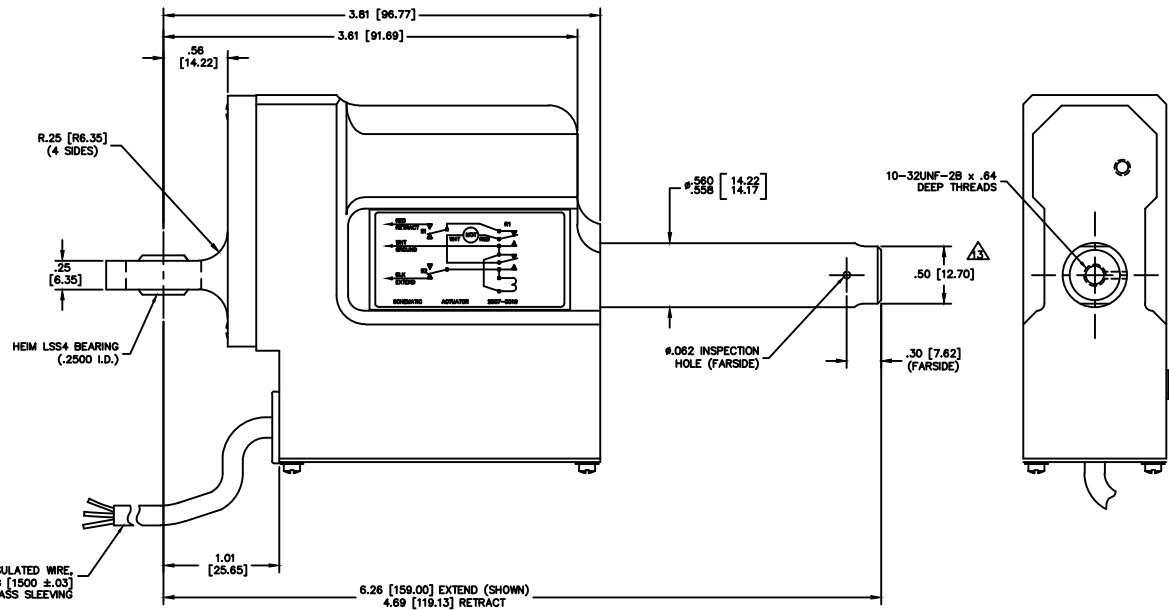
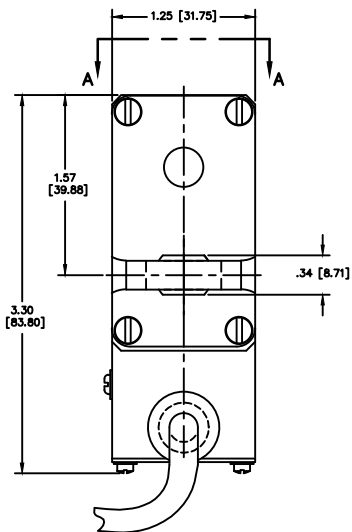
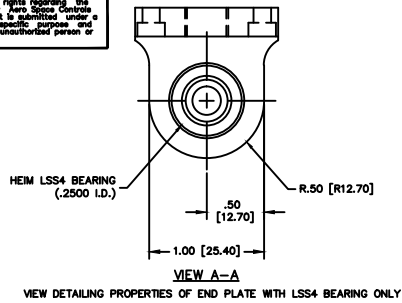


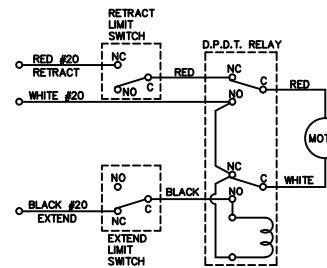
NOTICE
 This drawing is a part of the proprietary article therein disclosed and all design, manufacturing, reproduction, use, patent rights, and other rights regarding the same are expressly reserved by Aero Space Controls Corporation. Notwithstanding, herein, it is submitted under a confidential relationship for a specific purpose and shall not be disclosed to any unauthorized person or incorporated in any other projects.



20 GA. STRANDED TEFLON INSULATED WIRE,
 59° ±1.0° LONG [1500 ±.03]
 5.0 MIN. GLASS SLEEVING

NOTES CONTINUED:

7. WIRE PER MIL-16878/4
8. VOLTAGE: 28VDC
9. TOTAL STROKE SET WITH L/S: 1.57 IN. [40mm]
10. STATIC TENSION LOAD: 330 LBS. MAXIMUM
 OPERATIONAL LOAD: 157 LBS. NOMINAL / 225 LBS. MAXIMUM
11. MAXIMUM CURRENT: 2.0 AMPS WITH 225 LB. LOAD
12. WEIGHT: TBD
13. USE A BACK UP WRENCH ON THE FLATS OF THE DRIVE SLEEVE WHEN INSTALLING THE ROD END TO PREVENT DAMAGE TO THE INTERNAL PARTS OF THE ACTUATOR.
14. FOR ASSEMBLY SEE 1092301-39 DRAWING SHEET AS APPLICABLE TO THAT MULTI-SHEET DRAWING SERIES



REVISIONS				
C.O. NO.	REV.	REVISION DESCRIPTION	DATE	APPD.

QTY.	ITEM	SIZE	PART NUMBER	DESCRIPTION	MATERIAL	MATL. SPEC.	FINISH	FINISH SPEC.
				LIST OF MATERIALS				
DIMENSIONAL SYMBOLS PER USE 1143				UNLESS OTHERWISE SPECIFIED				
/ FLATNESS				TOLERANCES ARE IN INCHES				
- STRAIGHTNESS				FRACTIONS ± 1/4" ANGLES				
< ANGLE				DR. D. ORTH				
J. PERPENDICULARITY				CHK.				
/ PARALLELISM				ENGR.				
O CONCENTRICITY				APPD. DON SIMON 1-28-10				
* TRUE POSITION				PER ASME Y14.5				
C CHIRALITY (HORIZONTAL)				3. SURFACE TOLERANCES				
* SYMMETRY				PER ASME Y14.5				
* UNCL. HORIZONTAL				3. REMOVE BURRS & BREAK				
* UNCL. VERTICAL				EDGES EXCEPT SHOWN				
* (P/S) REGARDLESS OF FEATURE SIZE				4. INTERNAL RADI .005 TO .010				
				5. STRAIGHT SIZES MIL-S-7744				
				6. ALL DIMENSIONS BEFORE PLATING				
				7. TAPED PIPE MIL-P-7108				
				DO NOT SCALE DRAWING				
				SCALE 2:1				
				UNIT WT				
				LIB				
				BKT 1 OF 1				

AERO SPACE CONTROLS CORPORATION
 WENTZ, KANSAS
ACTUATOR
 - OUTLINE -
 2007-0019