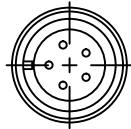
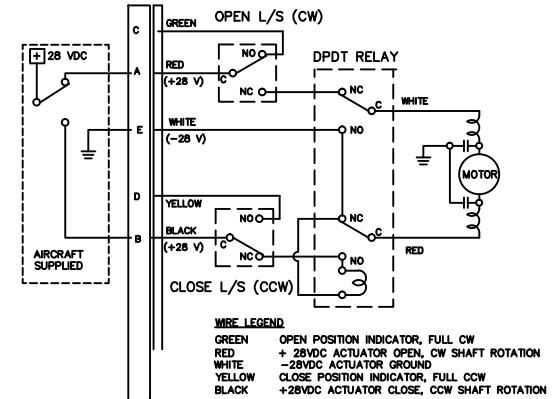
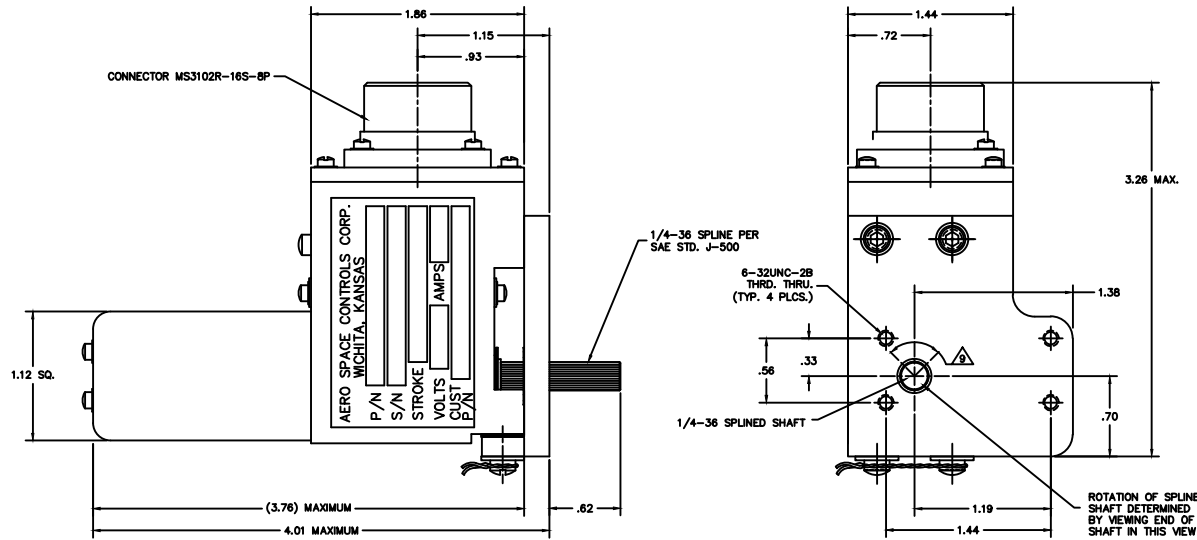


— NOTICE —  
 This drawing is a part of the proprietary article therein disclosed and all design, manufacturing, reproduction, use, patent rights, and other rights regarding the same are expressly reserved by Aero Space Controls Corporation, Wichita, Kansas. It is submitted under a confidential relationship for a specific purpose and shall not be disclosed to any unauthorized person or incorporated in any other projects.



—DETAIL ONLY FOR DISPLAYING CONNECTOR ORIENTATION—



ELECTRICAL SCHEMATIC

—SCHEMATIC SHOWN IN FULL OPEN POSITION—

— FOR DRAFTING PURPOSES THIS SCHEMATIC HAS BEEN GROUPED —

NOTES CONTINUED:

7. NOMINAL VOLTAGE: 28 VDC
8. CURRENT (MAXIMUM): .15 AMPS AT 5 LB.-IN. LOAD
9. STROKE: 90° ±2° SHAFT ROTATION
10. TIME/STROKE, RATE LOAD: 15-30 SECONDS / 90° AT 5 LB.-IN.
11. DUTY CYCLE: CONTINUOUS AT 5 LB.-IN. LOAD
12. RADIO NOISE FILTERED TO: BS21320 CONDUCTION AND RADIATED EMISSION
13. TEMPERATURE RANGE: -65° F TO +160° F
14. WEIGHT: 1.2 LB. MAXIMUM
15. 1003A100-1 IS EQUIVALENT TO PART NUMBER 101-385012-1
16. FOR TOP LEVEL 'ASC' ASSEMBLY SEE DRAWING '1003101'
17. THIS DRAWING MAY BE USED FOR REPAIRS AND OVERHAULS

-1		ACTUATOR, ROTARY							
QTY.	ITEM	SIZE	PART NUMBER	DESCRIPTION	MATERIAL	MAT'L. SPEC.	FINISH	FINISH SPEC.	
LIST OF MATERIALS									
DIMENSIONAL SYMBOLS PER ASME Y14.5		UNLESS OTHERWISE SPECIFIED		SIGNATURES		DATE		<b>AERO SPACE CONTROLS CORPORATION</b> <b>WICHITA, KANSAS</b>  <b>ROTARY ACTUATOR</b> <b>-OUTLINE-</b>  CODE IDENT No. <b>D</b> SIZE <b>D</b> DWG. No. <b>1003A100</b>  SCALE: 2:1 UNIT WT. LBS. SHT. 1 OF 1	
▭ FLATNESS — STRAIGHTNESS < ANGLARITY ⊥ PERPENDICULARITY // PARALLELISM ⊙ CONCENTRICITY ⊕ TRUE POSITION ○ CIRCULARITY (ROUNDNESS) ≡ SYMMETRY Ⓜ (MMC) MAXIMUM MATERIAL CONDITION Ⓢ (RFS) REGARDLESS OF FEATURE SIZE		1. DIMENSIONS ARE IN INCHES - TOLERANCES ON - FRACTIONS ± 1/16 ANGLES ±0° 30' XX DEC ±.030 DRILL HOLES AND 10387 XXX DEC ±.010		DR. D. ORTH		4-12-11			
		2. SURFACE ROUGHNESS PER ASME-B46.1		CHK.					
		3. REMOVE BURRS & BREAK SHARP EDGES .010 MAX.		ENGR.					
		4. INTERNAL RADII .005 TO .015		APPD. DON SIMON		4-12-11			
				6. ALL DIMENSIONS BEFORE PLATING					
				5. STRAIGHT SCREW MIL-S-7742 TAPERED PIPE MIL-P-7105		DO NOT SCALE DRAWING			