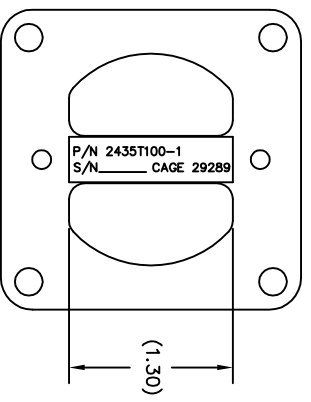
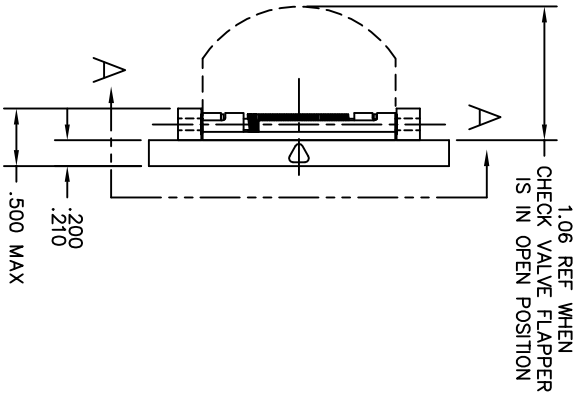
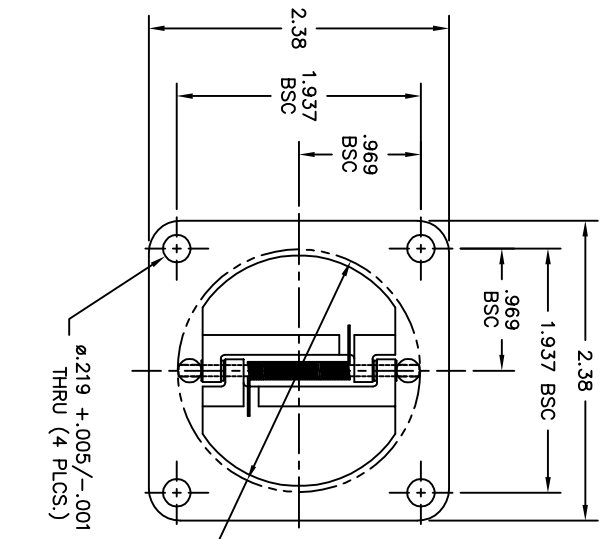


— NOTICE —
 This drawing is a part of the proprietary article therein, disclosed and all design, manufacturing, reproduction, use, patent rights, and sales rights regarding the same are expressly reserved by Aero Space Controls Corporation, Wichita, Kansas. It is submitted under a confidentiality relationship for a specific purpose and all references to any other person or project incorporated in any other projects.



REVISIONS				
C.O. NO.	REV.	REVISION DESCRIPTION	DATE	APPD.
ASC2155	A	REDRAWN TO CAD. IS (-1) WAS NO DASH	6-6-02	D.S.
ASC2637	B	ADDED 1.06 REF DIM. IS 2.38 WAS 2.41 MAX. DELETED 0.1920/1.925 X .100 MAX. ADD (-3) CONFIGURATION.	9-23-03	D.S.
ASC2705	C	IN (-1 & -3) IS 1.937 WAS 1.939	12-10-03	D.S.
ASC2839	D	ADD VIEW A-A FOR LOCATION OF NAMEPLATE PER 2435101-5 ASS'Y. BEING USED FOR THE 2435T100-1.	5-19-04	D.S.
ASC4331	E	ADD NOTES (1) AND (2)	5-21-07	D.S.

NOTES CONTINUED:

- EFFECTIVE AT SERIAL NUMBER 160 THE (-1) CONFIGURATION WILL BE ASSEMBLED AND SHIPPED WITHOUT ANY PRE-TENSION ON THE SPRING.
- FOR ASSEMBLY SEE DRAWING 2435101-5

DASH NO.	FINAL
NEXT ASSY.	USED ON
APPLICATION	

QTY	ITEM SIZE	2435T100-1	PART NUMBER	DESCRIPTION	ALUMINUM	MATERIAL	MATL. SPEC	FINISH	FINISH SPEC
DIMENSIONAL SYMBOLS PER ASME Y14.5									
UNLESS OTHERWISE SPECIFIED									
1. DIMENSIONS ARE IN INCHES									
FRACTIONS IN INCHES									
XX DEC ±.001									
XXX DEC ±.001									
AND 10/97									
2. SURFACE ROUGHNESS PER									
3. HOLE END ROUNDS & BREAK									
SHARP EDGES AND MAX									
4. INTERNAL RADIUS .005 TO .015									
TAPERED TIPS .015-7/64									
5. STRAIGHT SCREW NUTS-7/16									
TAPERED PIPE NUTS-7/16									
DO NOT SCALE DRAWING									
SIGNATURES			DATE			TITLE			
DR D. ORTH			5-19-04			AERO SPACE CONTROLS CORPORATION			
CHK						WICHITA, KANSAS			
ENGR						CHECK VALVE			
APPR Don Simon						2435T100			
NEXT ASSY						SCALE 1:1			
6. ALL DIMENSIONS						UNIT WT			
BEFORE PLATING						LBS			
						SHT 1 OF 2			