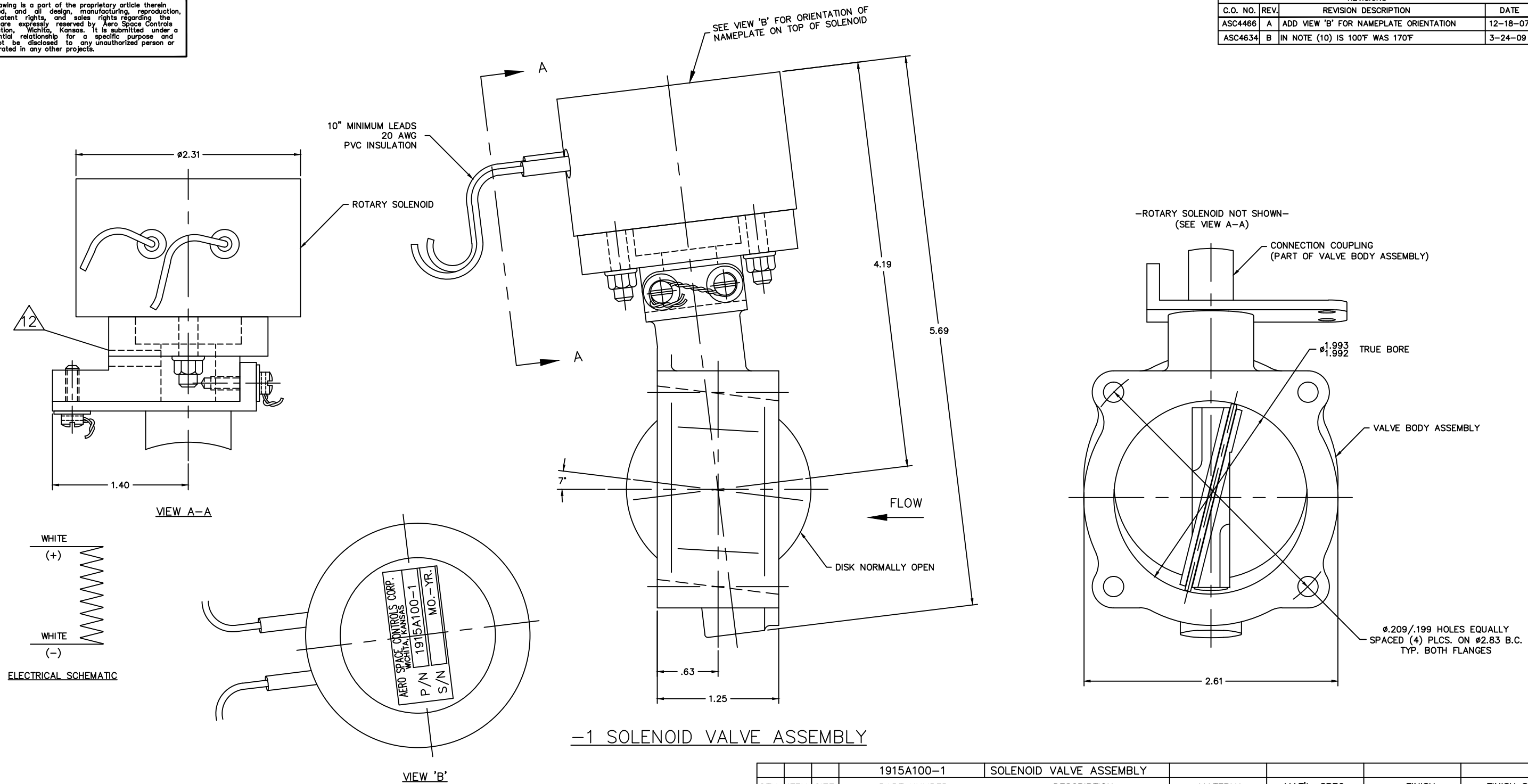


— NOTICE —
 This drawing is a part of the proprietary article therein disclosed, and all design, manufacturing, reproduction, use, patent rights, and sales rights regarding the same are expressly reserved by Aero Space Controls Corporation, Wichita, Kansas. It is submitted under a confidential relationship for a specific purpose and shall not be disclosed to any unauthorized person or incorporated in any other projects.

REVISIONS				
C.O. NO.	REV.	REVISION DESCRIPTION	DATE	APPD.
ASC4466	A	ADD VIEW 'B' FOR NAMEPLATE ORIENTATION	12-18-07	D.S.
ASC4634	B	IN NOTE (10) IS 100F WAS 170F	3-24-09	D.S.



-1 SOLENOID VALVE ASSEMBLY

NOTES CONTINUED:

- 7. APPROXIMATE TOTAL WEIGHT: 2.25 lbs.
- 8. VOLTAGE: 24-28 VDC, 32 WATTS AT 68°F
- 9. VALVE IS POWER CLOSED, NORMALLY OPEN
DUTY CYCLE: CONTINUOUS
- 10. AMBIENT TEMPERATURE: -60°F TO 100°F
- 11. SURFACE TEMPERATURE OF SOLENOID CAN REACH 170°F WHILE ENERGIZED

△ THIS SURFACE OF THE SOLENOID SUPPORT BRACKET HAS BEEN SUPPLIED WITH A .165 WIDE x 500 LG. SLOT THROUGH FOR VIEWING THE DROP IN CONNECTION BETWEEN THE SHAFT AND PIN OF THE SOLENOID AND THE COUPLING OF THE VALVE BODY ASSEMBLY. THE FOLLOWING LISTS WHAT WILL BE VISIBLE WITHIN THIS WINDOW AND UNDER WHAT CONDITIONS:
 -IN A NON-ENERGIZED SOLENOID STATE THE BUTTERFLY DISK OF THE VALVE ASSEMBLY WILL BE IN A 'NORMALLY OPEN' POSITION. WITHIN THE WINDOW THE SOLENOID SHAFT/PIN WILL BE VISIBLE WITH SAME ORIENTED WITHIN A SLOT IN THE COUPLING OF THE VALVE BODY ASSEMBLY.
 -IN AN ENERGIZED SOLENOID STATE THE BUTTERFLY DISC OF THE VALVE BODY WILL ROTATE CLOCKWISE TO A 'FULLY CLOSED' POSITION. WITHIN THE WINDOW ONLY THE COUPLING OF THE VALVE BODY ASSEMBLY WILL BE VISIBLE.

13. FOR ASSEMBLY DRAWING SEE 1915301

QTY.	ITEM	SIZE	PART NUMBER	DESCRIPTION	MATERIAL	MAT'L. SPEC.	FINISH	FINISH SPEC.
			1915A100-1	SOLENOID VALVE ASSEMBLY				
LIST OF MATERIALS								
DIMENSIONAL SYMBOLS PER ASME Y14.5			UNLESS OTHERWISE SPECIFIED		SIGNATURES		DATE	
□ FLATNESS — STRAIGHTNESS ∠ ANGULARITY ⊥ PERPENDICULARITY ∥ PARALLELISM ⊙ CONCENTRICITY ⊕ TRUE POSITION ○ CIRCULARITY (ROUNDNESS) ≡ SYMMETRY (M) (MMC) MAXIMUM MATERIAL CONDITION (S) (RFS) REGARDLESS OF FEATURE SIZE			1. DIMENSIONS ARE IN INCHES - TOLERANCES ON - FRACTIONS ± 1/16 ANGLES ± 0° 30' XX DEC ± .030 DRILL HOLES AND 10387 XXX DEC ± .010 2. SURFACE ROUGHNESS PER ASME-B46.1 3. REMOVE BURRS & BREAK SHARP EDGES .010 MAX. 4. INTERNAL RADII .005 TO .015 5. STRAIGHT SCREW MIL-S-7742 TAPERED PIPE MIL-P-7105		DR. D. ORTH CHK. ENGR. APPD. S. AXTELL NEXT ASSY:		2-28-06 3-17-06	
AERO SPACE CONTROLS CORPORATION WICHITA, KANSAS						TITLE		
SOLENOID VALVE ASSEMBLY						1915A100		
DO NOT SCALE DRAWING						SCALE	UNIT WT	LBS
6. ALL DIMENSIONS BEFORE PLATING						2:1		
6. ALL DIMENSIONS BEFORE PLATING						SIZE	DWG NO.	
6. ALL DIMENSIONS BEFORE PLATING						D	1915A100	
6. ALL DIMENSIONS BEFORE PLATING						SHT	1	OF 1