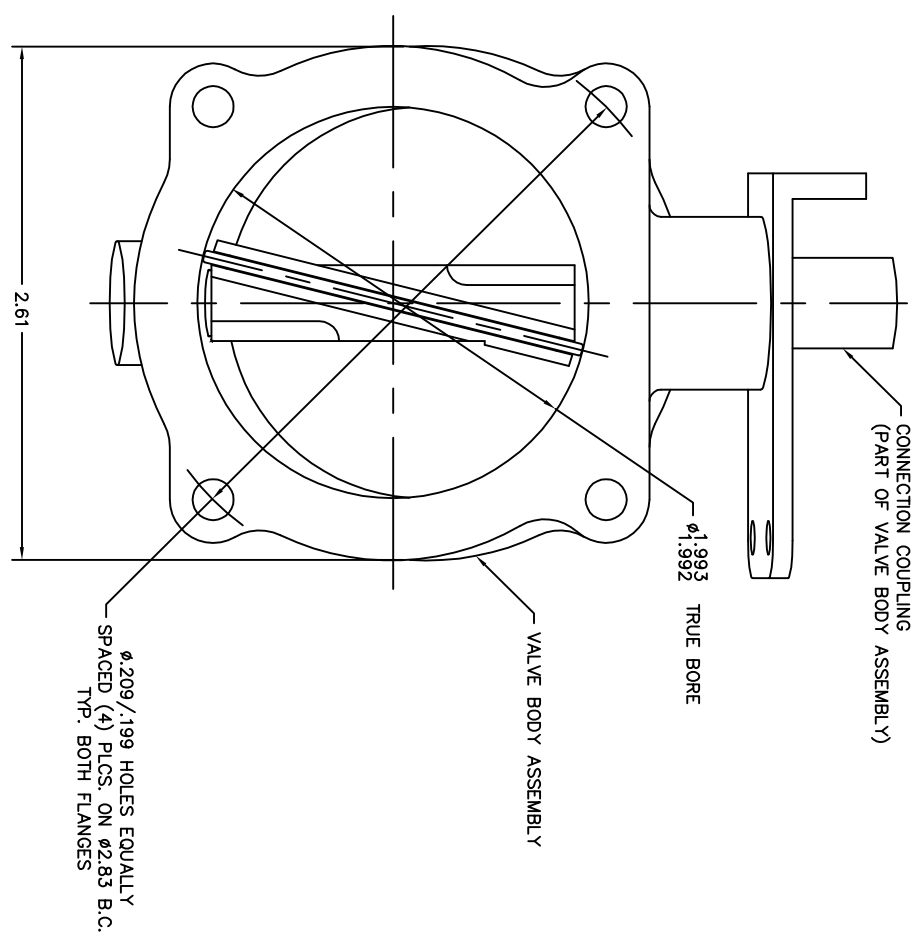
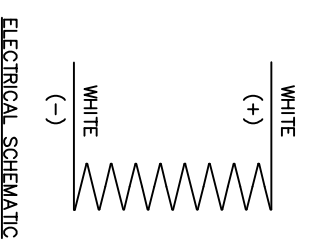
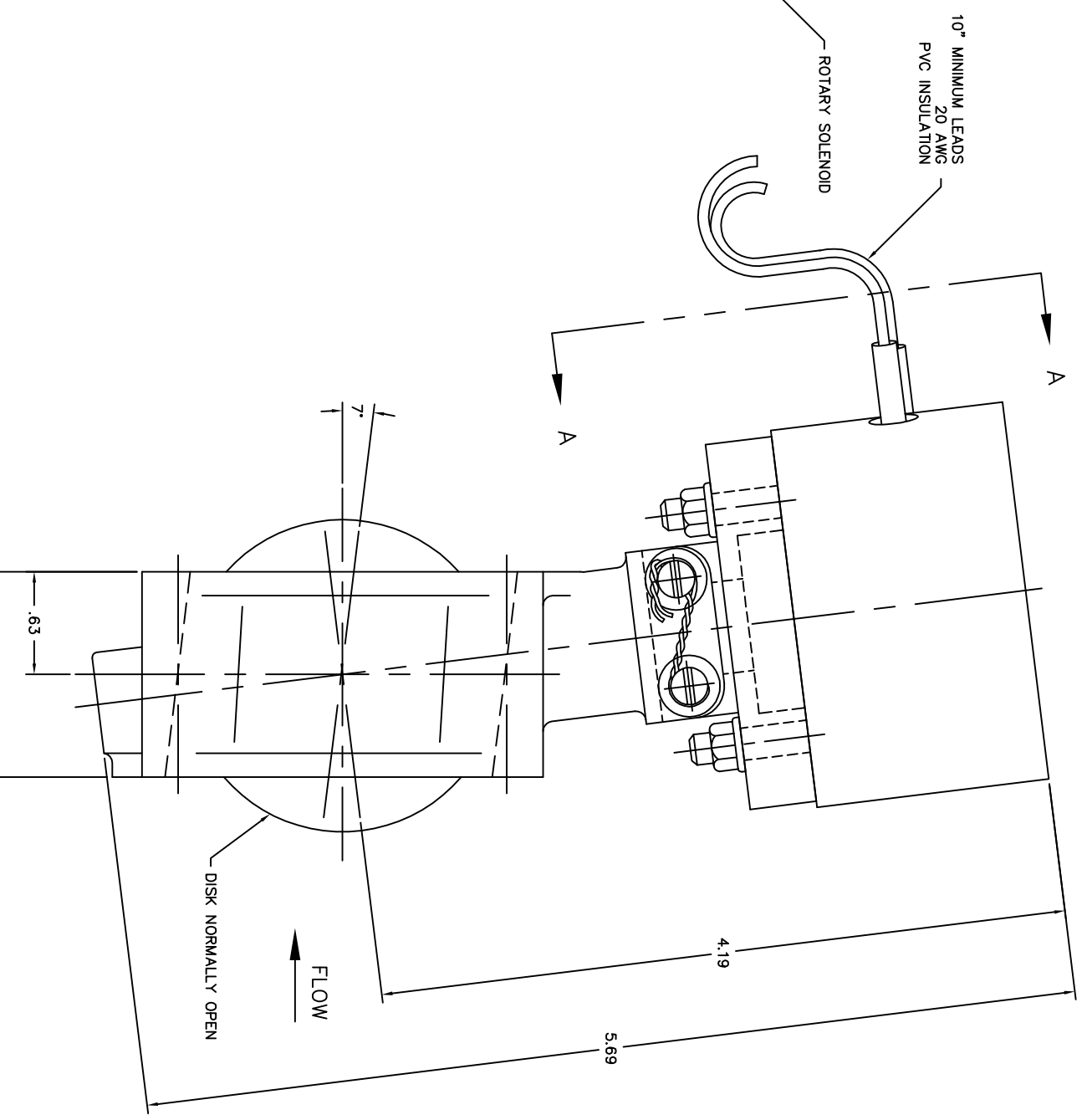
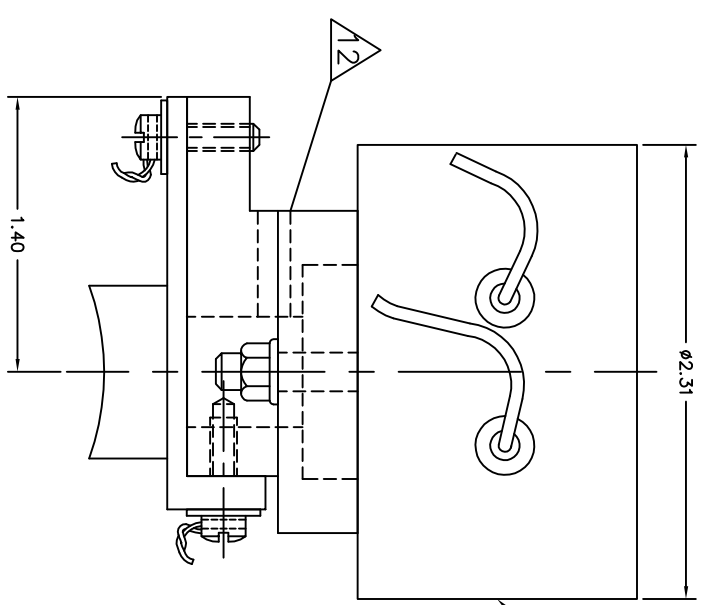


— NOTICE —
 This drawing is a part of the proprietary article therein, and the design and development of the same are, in whole or in part, the property of Aero Space Controls Corporation, Kansas. It is submitted under a non-disclosure agreement and its disclosure shall not be disclosed to any unauthorized person or incorporated in any other projects.

REVIEWS		REVISION DESCRIPTION	DATE	APPD.
C.O. NO.	REV.			



—1 SOLENOID VALVE ASSEMBLY

- NOTES CONTINUED:
- APPROXIMATE TOTAL WEIGHT: 2.25 lbs.
 - VOLTAGE: 24-28 VDC, 32 WATTS AT 68F
 - VALVE IS POWER CLOSED, NORMALLY OPEN DUTY CYCLE: CONTINUOUS
 - AMBIENT TEMPERATURE: -60F TO 170F
 - SURFACE TEMPERATURE OF SOLENOID CAN REACH 170F WHILE ENERGIZED

THIS SURFACE OF THE SOLENOID SUPPORT BRACKET HAS BEEN SUPPLIED WITH A .165 WIDE x .500 LG. SLOT THROUGH FOR VIEWING THE DROP IN CONNECTION BETWEEN THE SHAFT AND PIN OF THE SOLENOID AND THE COUPLING OF THE VALVE BODY ASSEMBLY. THE FOLLOWING LISTS WHAT WILL BE VISIBLE WITHIN THIS WINDOW AND UNDER WHAT CONDITIONS:
 -IN A NON-ENERGIZED SOLENOID STATE THE BUTTERFLY DISK OF THE VALVE ASSEMBLY WILL BE IN A "NORMALLY OPEN" POSITION. WITHIN THE WINDOW THE SOLENOID SHAFT/PIN WILL BE VISIBLE WITH SAME ORIENTED WITHIN A SLOT IN THE COUPLING OF THE VALVE BODY ASSEMBLY.
 -IN AN ENERGIZED SOLENOID STATE THE BUTTERFLY DISC OF THE VALVE BODY WILL ROTATE CLOCKWISE TO A "FULLY CLOSED" POSITION. WITHIN THE WINDOW ONLY THE COUPLING OF THE VALVE BODY ASSEMBLY WILL BE VISIBLE.

13. FOR ASSEMBLY DRAWING SEE 1915A100

QTY.	ITEM	SIZE	PART NUMBER	DESCRIPTION	MATERIAL	MAT'L. SPEC.	FINISH	FINISH SPEC.
			1915A100-1	SOLENOID VALVE ASSEMBLY				

LIST OF MATERIALS			
DIMENSIONAL SYMBOLS PER ASME Y14.5	UNLESS OTHERWISE SPECIFIED	SIGNATURES	DATE
FLATNESS	1. DIMENSIONS ARE IN INCHES - TOLERANCES ON -	DR. D. ORTH	2-28-06
STRAIGHTNESS	FRAGCTIONS ± 1/16	CHK.	
ANGULARITY	XX DEC ±.030 ANGLES ±0° 30'	ENGR.	
PERPENDICULARITY	XXX DEC ±.010 DRILL HOLES AND 10387		
PARALLELISM	2. SURFACE ROUGHNESS PER MIL-STD-10	APPD. S. AXTELL	3-17-06
CONCENTRICITY	3. REMOVE BURRS & BREAK SHARP EDGES .010 MAX.	NEXT ASST:	
TRUE POSITION	4. INTERNAL RADII .005 TO .015		
CIRCULARITY (ROUNDNESS)	5. STRAIGHT SCREW MIL-S-7742 TAPERED PIPE MIL-P-7105		
SYMMETRY			
(MNC) MAXIMUM MATERIAL CONDITION			
(RFS) REGARDLESS OF FEATURE SIZE			

AERO SPACE CONTROLS CORPORATION WICHITA, KANSAS	
TITLE	SOLENOID VALVE ASSEMBLY
CODE IDENT NO.	D
SIZE	DWG NO. 1915A100
SCALE	2:1
UNIT	LBS
WT	SHT 1 OF 1