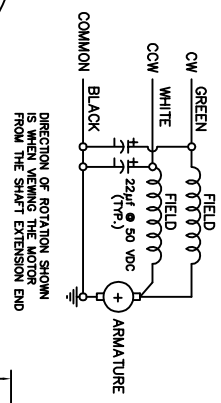
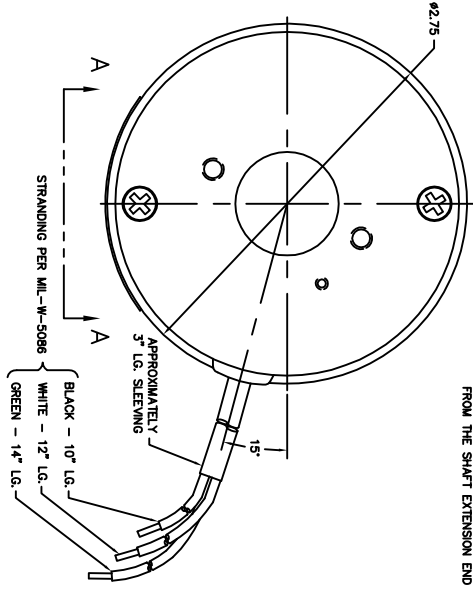


**NOTICE**  
 This drawing is a part of the product's general description. It is not intended to be used as a manufacturing drawing. It is intended to be used as a reference drawing only. It is not intended to be used as a manufacturing drawing. It is not intended to be used as a manufacturing drawing. It is not intended to be used as a manufacturing drawing.

**SCHEMATIC WIRING DIAGRAM**

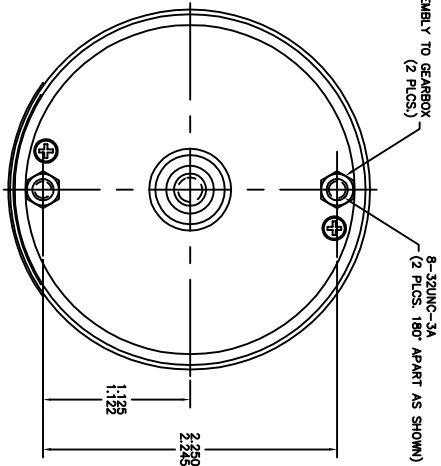
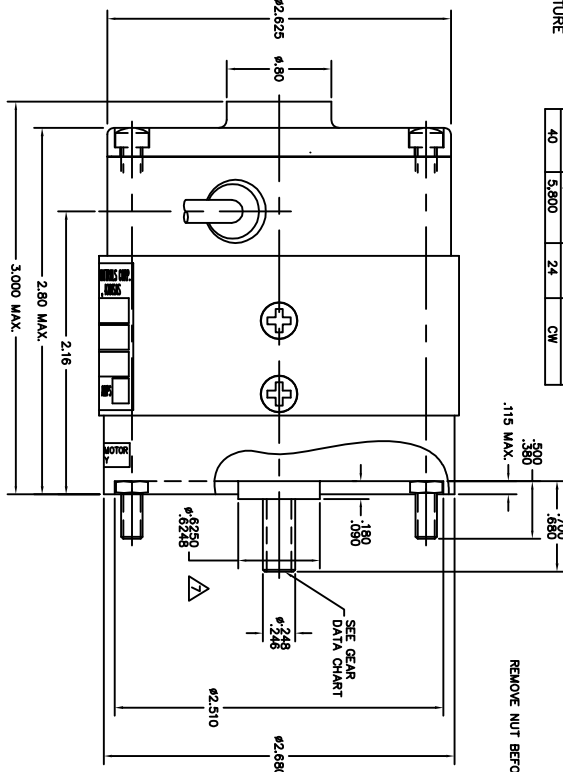


DIRECTION OF ROTATION SHOWN IS WHEN VIEWING THE MOTOR FROM THE SHAFT EXTENSION END



**TABLE**

TORQUE OZ-IN	SPEED RPM ±15%	INPUT VOLTS	ROTATIONAL DIRECTION
5	12,500	28	CCW
10	10,900	24	CCW
15	8,600	24	CCW
20	8,600	28	CCW
25	7,400	24	CCW
40	5,800	24	CW



**GEAR DATA FOR OUTPUT GEAR/SHAFT**

CLASS	COMM.	SL. 3
DIAMETRAL PITCH	48	48
PRESSURE ANGLE	20°	20°
NUMBER OF TEETH	108	108
ADDENDUM	1.000	1.000
OUTSIDE DIAMETER	14.5	14.5
ROOT DIAMETER	14.75	14.75
WHEEL TOOTH DEPTH	0.475	0.475
TOOTH ADDENDUM	0.475	0.475
TOOTH THICKNESS	0.395	0.395
MEASUREMENT OVER 2 TEETH	0.287	0.287
LOAD DIAMETER	0.287	0.287
NEW/OLD	0.287	0.287
TOTAL COMPOSITE ERROR	0.02	0.02
OVERCHECKING	MAX. MIN. REQS.	MAX. MIN. REQS.
REMARKS	MAX. MIN. REQS.	MAX. MIN. REQS.
BASE CIRCUIT DIA.	1.762	1.762
SURFACE FINISH ON TEETH	32	32
PART NUMBER (Q351)	100-524073-1	100-524073-1
MAINLINE PART NUMBER	3375	3375
GEAR TOTAL SEC	MAX. MIN.	MAX. MIN.
BACKLASH	MAX. MIN.	MAX. MIN.
CONCENTRICITY	MAX. MIN.	MAX. MIN.
PERPENDICULARITY	MAX. MIN.	MAX. MIN.
FORM TOLERANCE	MAX. MIN.	MAX. MIN.
FREE-STATE CONTROL DIA.	1.76	1.76

**NOTES CONTINUED:**  
 RUNOUT BETWEEN P.D. OF SHAFT AND BEARING O.D. NOT TO EXCEED .003 T.I.R.  
 DIELECTRIC: 500 VOLTS (RMS) @ 60 HZ FOR 15 SECONDS WITH CAPACITORS REMOVED  
 SEE DRAWING 18FS36 FOR ASSEMBLY

DASH NO.	NEXT ASSY.	USED ON	APPLICATION
-1	GF338-1	100-524073-1	

QTY.	ITEM SIZE	PART NUMBER	D.C. MOTOR	DESCRIPTION	MATERIAL	MAT'L SPEC.	FINISH	FINISH SPEC.
		-1						

**LIST OF MATERIALS**

SIGNATURES	DATE	TITLE
DR. D.O.D.	3-26-70	AERO SPACE CONTROLS CORPORATION WICHITA, KANSAS
CHK.		D.C. MOTOR
ENGR.		OUTLINE
APPD.		

CODE IDENT NO. SIZE DWG NO. FSS36  
 UNIT WT. LBS SHF 1 OF 1

**MOTOR COMPLETES WITH BECH P/N 100-384040**  
**PERFORMANCE CHARACTERISTICS:**  
 DUTY CYCLE: 15 SEC ON AT 40 OZ.-IN. CW  
 15 SEC OFF AT 5 OZ.-IN. CW  
 OFF FOR 20 MINUTES  
 RATED OPERATING VOLTAGE: 24 VDC  
 RATED LOAD: 40 OZ.-IN.  
 RATED SPEED AT RATED LOAD: 5800 RPM, CW  
 LOCKED ROTOR CURRENT: 35 AMPS MAXIMUM  
 AMBIENT OPERATING TEMPERATURE: -20° TO +135°  
 MOTOR WILL PRODUCE 60 OZ.-IN. OF TORQUE FOR 20 SEC. WITHOUT STALLING WHEN ENERGIZED WITH 24 VDC IN THE CW DIRECTION OR 28 VDC IN THE CCW DIRECTION.  
 SEE TABLE FOR OTHER PERFORMANCE VALUES

**REVISIONS**

C.O. NO.	REV.	REVISION DESCRIPTION	DATE	APPD.
ASC4108	E	REWORK TO CAD	12-4-88	D.S.
ASC4177	F	ADD 18FS30-1 WARRANTY DECAL AND VIEW A-A	8-10-06	S.A.
ASC4183	G	ADD GEAR DATA CHART, NOTE (9), Ø2.75 DIA.	9-19-06	S.A.