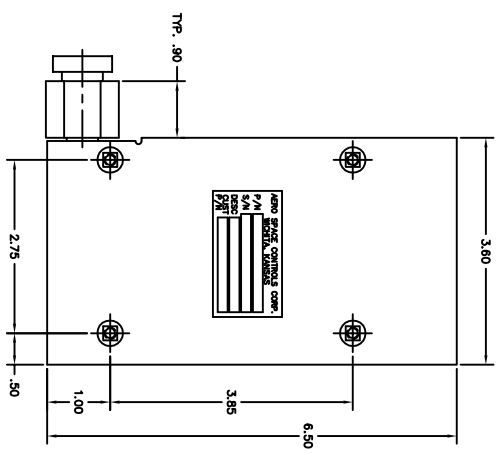
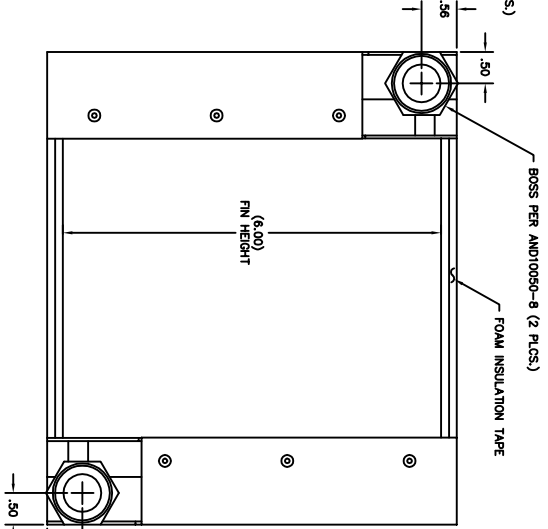
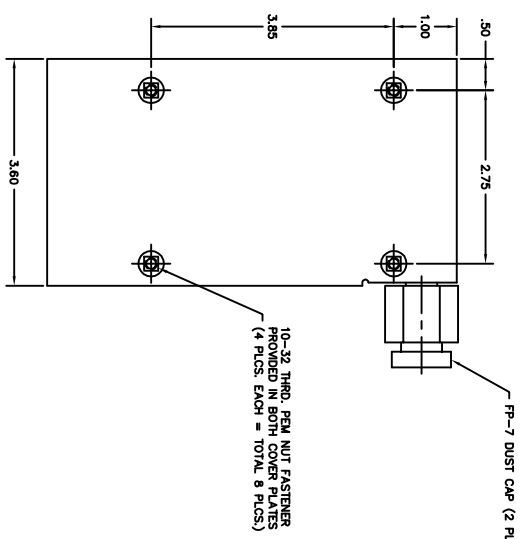
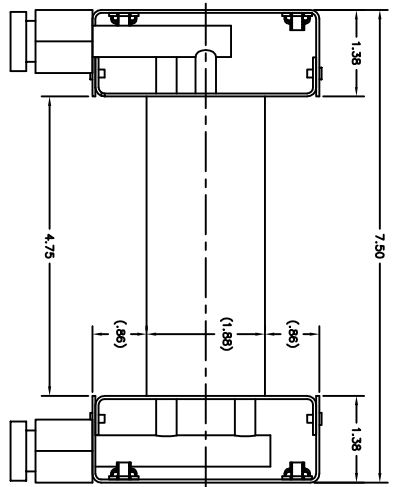


**NOTICE**  
 This drawing is a part of the proprietary design, trade dress, and other intellectual property of the manufacturer. It is the property of the manufacturer and is not to be reproduced, stored in a retrieval system, or transmitted in any form or by any means, electronic, mechanical, photocopying, recording, or by any information storage and retrieval system, without the prior written permission of the manufacturer.

**PERFORMANCE DATA AND REQUIREMENTS**

1. COOLING MEDIUM: R12 FREON
2. OPERATING PRESSURE: 80 PSIG
3. PROOF PRESSURE: 200 PSI
4. BURST PRESSURE: 400 PSI
5. SATURATED SUCTION TEMPERATURE WITH 5° SUPER HEAT: 28°F
6. INLET TEMPERATURE FROM EXPANSION VALVE 130°F
7. AIR FLOW: 120 CFM @70°F
8. PRESSURE DROP: 2 IN H2O @ 120 CFM
9. COOLING CAPACITY: 5500 BTU/HR. (MIN.)
10. AIR INLET: DRY BULB TEMPERATURE: 90°F  
 WET BULB TEMPERATURE: 67°F



REVISIONS		DATE	APPD.
C.O. NO.	REV.	REVISION DESCRIPTION	
ASC1028	G	SEE ECO FOR REVISIONS	8-13-88 D.S.
ASC1381	H	ADDED VIEW OF NAMEPLATE	10-25-89 D.S.
ASC4294	J	UPDATE DETAILING OF COVER PLATES. SEE ECO.	2-22-07 D.S.

REV.	DATE	DESCRIPTION	BY	CHKD.
1				

DESIGNER	DATE	TITLE
ASC1028	8-13-88	EVAPORATOR

1. DIMENSIONS UNLESS OTHERWISE SPECIFIED	INCHES
2. DIMENSIONS ARE TO CENTER UNLESS OTHERWISE SPECIFIED	
3. DIMENSIONS ARE TO CENTER UNLESS OTHERWISE SPECIFIED	
4. DIMENSIONS ARE TO CENTER UNLESS OTHERWISE SPECIFIED	
5. DIMENSIONS ARE TO CENTER UNLESS OTHERWISE SPECIFIED	
6. DIMENSIONS ARE TO CENTER UNLESS OTHERWISE SPECIFIED	
7. DIMENSIONS ARE TO CENTER UNLESS OTHERWISE SPECIFIED	
8. DIMENSIONS ARE TO CENTER UNLESS OTHERWISE SPECIFIED	
9. DIMENSIONS ARE TO CENTER UNLESS OTHERWISE SPECIFIED	
10. DIMENSIONS ARE TO CENTER UNLESS OTHERWISE SPECIFIED	

CODE	DATE	SCALE	UNIT
D	1954TT100	1:1	INCH

NOTES CONTINUED:  
 7. FOR EVAPORATOR COIL ASSEMBLY SEE DRAWING 1954101