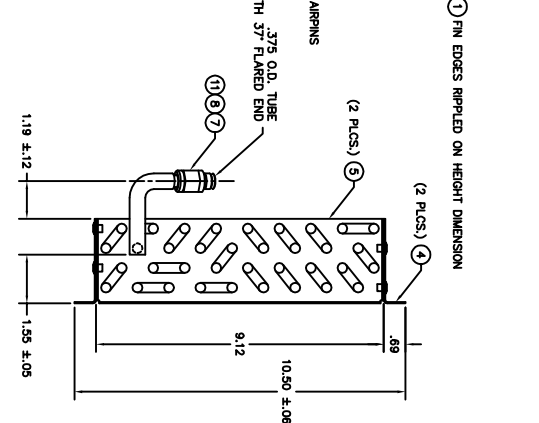
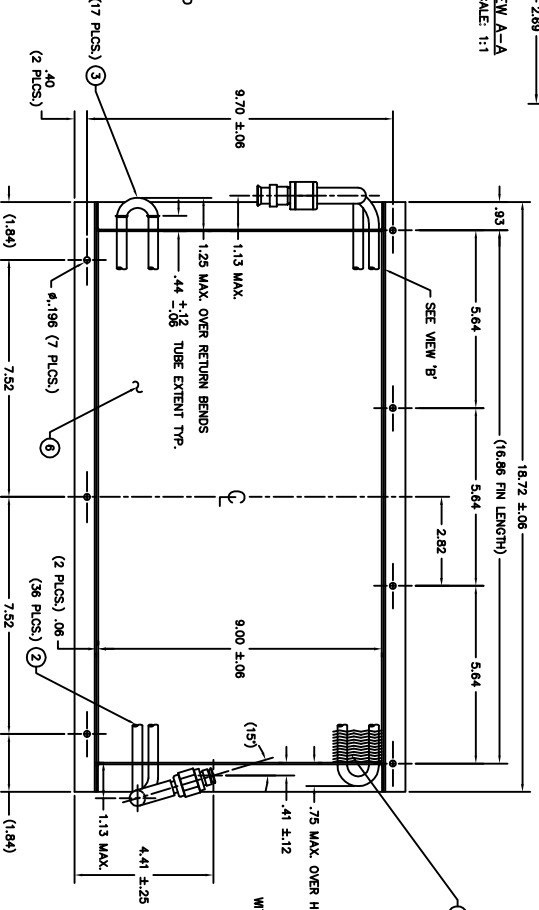
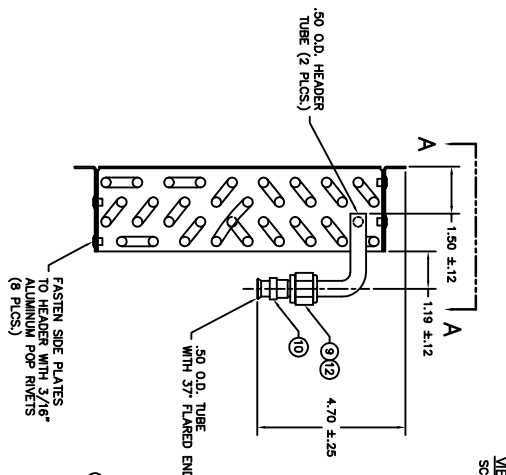
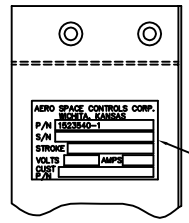
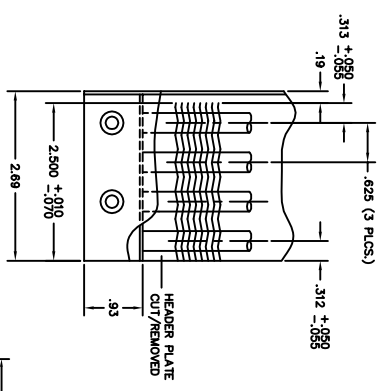


**NOTICE**  
 This drawing is a part of the product design. It is the property of Aero Space Controls Corporation and is not to be reproduced, stored in a retrieval system, or transmitted in any form or by any means, electronic, mechanical, photocopying, recording, or by any information storage and retrieval system, without the prior written permission of Aero Space Controls Corporation.



**-3 CONDENSER COIL CORE SUB-ASSEMBLY**  
**-1 FINAL ASSEMBLY**

- NOTES CONTINUED:**
- BEND RADIUS FOR SIDE AND HEADER PLATES IS .08 MAXIMUM
  - COIL TO BE IDENTIFIED BY PERMANENT INK STAMP
  - COIL TO BE FREE OF INTERNAL FOREIGN MATTER, RESIDUE OR CONTAMINATION. COIL TO BE DEHYDRATED AND SEALED AT FITTINGS.
  - ALUMINUM COMPONENTS SHALL HAVE CHEM. FILM PER MIL-C-5541E, CLASS 1A FINISH
  - OPERATING PRESSURE: 400 PSIG
  - TEST PRESSURE: 800 PSIG
  - BURST PRESSURE: 800 PSIG
  - CAPACITY AT RATING POINT - COIL HEAT EXCHANGE CAPABILITY SHALL BE A MINIMUM OF 33,000 BTU/HR. WITH R-12 REFRIGERANT UNDER THE FOLLOWING CONDITIONS: SATURATED VAPOR INLET TEMPERATURE 110°F DB, 100% SATURATED DISCHARGE. DRYING AIR 550 SSFL 47.110°F DB, 58% RH.
  - COIL SHALL PROVIDE THE RATED OUTPUT OF VOLT (12) WITH A MAXIMUM REFRIGERANT PRESSURE DROP OF 1.5 PSI THROUGH THE COIL.
  - AIR PRESSURE DROP AT THE RATED CONDITIONS OF NOTE (12) SHALL NOT EXCEED .8 INCHES OF WATER
  - MAXIMUM WEIGHT SHALL BE (9) POUNDS.
  - THE UNIT SHALL BE CAPABLE OF WITHSTANDING IN FLIGHT OPERATIONAL LOADS OF 10 G'S

REV.	DATE	DESCRIPTION
1	1-4-99	ISSUED FOR PRODUCTION
2	1-4-99	ISSUED FOR PRODUCTION
3	1-4-99	ISSUED FOR PRODUCTION

REV.	DATE	DESCRIPTION
1	1-4-99	ISSUED FOR PRODUCTION
2	1-4-99	ISSUED FOR PRODUCTION
3	1-4-99	ISSUED FOR PRODUCTION

REV.	DATE	DESCRIPTION
1	1-4-99	ISSUED FOR PRODUCTION
2	1-4-99	ISSUED FOR PRODUCTION
3	1-4-99	ISSUED FOR PRODUCTION

REV.	DATE	DESCRIPTION
1	1-4-99	ISSUED FOR PRODUCTION
2	1-4-99	ISSUED FOR PRODUCTION
3	1-4-99	ISSUED FOR PRODUCTION

REV.	DATE	DESCRIPTION
1	1-4-99	ISSUED FOR PRODUCTION
2	1-4-99	ISSUED FOR PRODUCTION
3	1-4-99	ISSUED FOR PRODUCTION

REV.	DATE	DESCRIPTION
1	1-4-99	ISSUED FOR PRODUCTION
2	1-4-99	ISSUED FOR PRODUCTION
3	1-4-99	ISSUED FOR PRODUCTION

REV.	DATE	DESCRIPTION
1	1-4-99	ISSUED FOR PRODUCTION
2	1-4-99	ISSUED FOR PRODUCTION
3	1-4-99	ISSUED FOR PRODUCTION

REV.	DATE	DESCRIPTION
1	1-4-99	ISSUED FOR PRODUCTION
2	1-4-99	ISSUED FOR PRODUCTION
3	1-4-99	ISSUED FOR PRODUCTION

REV.	DATE	DESCRIPTION
1	1-4-99	ISSUED FOR PRODUCTION
2	1-4-99	ISSUED FOR PRODUCTION
3	1-4-99	ISSUED FOR PRODUCTION

REV.	DATE	DESCRIPTION
1	1-4-99	ISSUED FOR PRODUCTION
2	1-4-99	ISSUED FOR PRODUCTION
3	1-4-99	ISSUED FOR PRODUCTION

REV.	DATE	DESCRIPTION
1	1-4-99	ISSUED FOR PRODUCTION
2	1-4-99	ISSUED FOR PRODUCTION
3	1-4-99	ISSUED FOR PRODUCTION

REV.	DATE	DESCRIPTION
1	1-4-99	ISSUED FOR PRODUCTION
2	1-4-99	ISSUED FOR PRODUCTION
3	1-4-99	ISSUED FOR PRODUCTION

REV.	DATE	DESCRIPTION
1	1-4-99	ISSUED FOR PRODUCTION
2	1-4-99	ISSUED FOR PRODUCTION
3	1-4-99	ISSUED FOR PRODUCTION

REV.	DATE	DESCRIPTION
1	1-4-99	ISSUED FOR PRODUCTION
2	1-4-99	ISSUED FOR PRODUCTION
3	1-4-99	ISSUED FOR PRODUCTION

REV.	DATE	DESCRIPTION
1	1-4-99	ISSUED FOR PRODUCTION
2	1-4-99	ISSUED FOR PRODUCTION
3	1-4-99	ISSUED FOR PRODUCTION

REV.	DATE	DESCRIPTION
1	1-4-99	ISSUED FOR PRODUCTION
2	1-4-99	ISSUED FOR PRODUCTION
3	1-4-99	ISSUED FOR PRODUCTION

REV.	DATE	DESCRIPTION
1	1-4-99	ISSUED FOR PRODUCTION
2	1-4-99	ISSUED FOR PRODUCTION
3	1-4-99	ISSUED FOR PRODUCTION

REV.	DATE	DESCRIPTION
1	1-4-99	ISSUED FOR PRODUCTION
2	1-4-99	ISSUED FOR PRODUCTION
3	1-4-99	ISSUED FOR PRODUCTION

REV.	DATE	DESCRIPTION
1	1-4-99	ISSUED FOR PRODUCTION
2	1-4-99	ISSUED FOR PRODUCTION
3	1-4-99	ISSUED FOR PRODUCTION

REV.	DATE	DESCRIPTION
1	1-4-99	ISSUED FOR PRODUCTION
2	1-4-99	ISSUED FOR PRODUCTION
3	1-4-99	ISSUED FOR PRODUCTION

REV.	DATE	DESCRIPTION
1	1-4-99	ISSUED FOR PRODUCTION
2	1-4-99	ISSUED FOR PRODUCTION
3	1-4-99	ISSUED FOR PRODUCTION

REV.	DATE	DESCRIPTION
1	1-4-99	ISSUED FOR PRODUCTION
2	1-4-99	ISSUED FOR PRODUCTION
3	1-4-99	ISSUED FOR PRODUCTION

REV.	DATE	DESCRIPTION
1	1-4-99	ISSUED FOR PRODUCTION
2	1-4-99	ISSUED FOR PRODUCTION
3	1-4-99	ISSUED FOR PRODUCTION

REV.	DATE	DESCRIPTION
1	1-4-99	ISSUED FOR PRODUCTION
2	1-4-99	ISSUED FOR PRODUCTION
3	1-4-99	ISSUED FOR PRODUCTION

REV.	DATE	DESCRIPTION
1	1-4-99	ISSUED FOR PRODUCTION
2	1-4-99	ISSUED FOR PRODUCTION
3	1-4-99	ISSUED FOR PRODUCTION

REV.	DATE	DESCRIPTION
1	1-4-99	ISSUED FOR PRODUCTION
2	1-4-99	ISSUED FOR PRODUCTION
3	1-4-99	ISSUED FOR PRODUCTION

REV.	DATE	DESCRIPTION
1	1-4-99	ISSUED FOR PRODUCTION
2	1-4-99	ISSUED FOR PRODUCTION
3	1-4-99	ISSUED FOR PRODUCTION

REV.	DATE	DESCRIPTION
1	1-4-99	ISSUED FOR PRODUCTION
2	1-4-99	ISSUED FOR PRODUCTION
3	1-4-99	ISSUED FOR PRODUCTION

REV.	DATE	DESCRIPTION
1	1-4-99	ISSUED FOR PRODUCTION
2	1-4-99	ISSUED FOR PRODUCTION
3	1-4-99	ISSUED FOR PRODUCTION

REV.	DATE	DESCRIPTION
1	1-4-99	ISSUED FOR PRODUCTION
2	1-4-99	ISSUED FOR PRODUCTION
3	1-4-99	ISSUED FOR PRODUCTION

REV.	DATE	DESCRIPTION
1	1-4-99	ISSUED FOR PRODUCTION
2	1-4-99	ISSUED FOR PRODUCTION
3	1-4-99	ISSUED FOR PRODUCTION

REV.	DATE	DESCRIPTION
1	1-4-99	ISSUED FOR PRODUCTION
2	1-4-99	ISSUED FOR PRODUCTION
3	1-4-99	ISSUED FOR PRODUCTION

REV.	DATE	DESCRIPTION
1	1-4-99	ISSUED FOR PRODUCTION
2	1-4-99	ISSUED FOR PRODUCTION
3	1-4-99	ISSUED FOR PRODUCTION

REV.	DATE	DESCRIPTION
1	1-4-99	ISSUED FOR PRODUCTION
2	1-4-99	ISSUED FOR PRODUCTION
3	1-4-99	ISSUED FOR PRODUCTION

REV.	DATE	DESCRIPTION
1	1-4-99	ISSUED FOR PRODUCTION
2	1-4-99	ISSUED FOR PRODUCTION
3	1-4-99	ISSUED FOR PRODUCTION

REV.	DATE	DESCRIPTION
1	1-4-99	ISSUED FOR PRODUCTION
2	1-4-99	ISSUED FOR PRODUCTION
3	1-4-99	ISSUED FOR PRODUCTION

REV.	DATE	DESCRIPTION
1	1-4-99	ISSUED FOR PRODUCTION
2	1-4-99	ISSUED FOR PRODUCTION
3	1-4-99	ISSUED FOR PRODUCTION

REV.	DATE	DESCRIPTION
1	1-4-99	ISSUED FOR PRODUCTION
2	1-4-99	ISSUED FOR PRODUCTION
3	1-4-99	ISSUED FOR PRODUCTION

REV.	DATE	DESCRIPTION
1	1-4-99	ISSUED FOR PRODUCTION
2	1-4-99	ISSUED FOR PRODUCTION
3	1-4-99	ISSUED FOR PRODUCTION

REV.	DATE	DESCRIPTION
1	1-4-99	ISSUED FOR PRODUCTION
2	1-4-99	ISSUED FOR PRODUCTION
3	1-4-99	ISSUED FOR PRODUCTION

REV.	DATE	DESCRIPTION
1	1-4-99	ISSUED FOR PRODUCTION
2	1-4-99	ISSUED FOR PRODUCTION
3	1-4-99	ISSUED FOR PRODUCTION

REV.	DATE	DESCRIPTION
1	1-4-99	ISSUED FOR PRODUCTION
2	1-4-99	ISSUED FOR PRODUCTION
3	1-4-99	ISSUED FOR PRODUCTION

REV.	DATE	DESCRIPTION
1	1-4-99	ISSUED FOR PRODUCTION
2	1-4-99	ISSUED FOR PRODUCTION
3	1-4-99	ISSUED FOR PRODUCTION

REV.	DATE	DESCRIPTION
1	1-4-99	ISSUED FOR PRODUCTION
2	1-4-99	ISSUED FOR PRODUCTION
3	1-4-99	ISSUED FOR PRODUCTION

REV.	DATE	DESCRIPTION
1	1-4-99	ISSUED FOR PRODUCTION
2	1-4-99	ISSUED FOR PRODUCTION
3	1-4-99	ISSUED FOR PRODUCTION

REV.	DATE	DESCRIPTION
1	1-4-99	ISSUED FOR PRODUCTION
2	1-4-99	ISSUED FOR PRODUCTION
3	1-4-99	ISSUED FOR PRODUCTION

REV.	DATE	DESCRIPTION
1	1-4-99	ISSUED FOR PRODUCTION
2	1-4-99	ISSUED FOR PRODUCTION
3	1-4-99	ISSUED FOR PRODUCTION

REV.	DATE	DESCRIPTION
1	1-4-99	ISSUED FOR PRODUCTION
2	1-4-99	ISSUED FOR PRODUCTION
3	1-4-99	ISSUED FOR PRODUCTION

REV.	DATE	DESCRIPTION
1	1-4-99	ISSUED FOR PRODUCTION
2	1-4-99	ISSUED FOR PRODUCTION
3	1-4-99	ISSUED FOR PRODUCTION

REV.	DATE	DESCRIPTION
1	1-4-99	ISSUED FOR PRODUCTION
2	1-4-99	ISSUED FOR PRODUCTION
3	1-4-99	ISSUED FOR PRODUCTION

REV.	DATE	DESCRIPTION
1	1-4-99	ISSUED FOR PRODUCTION
2	1-4-99	ISSUED FOR PRODUCTION
3	1-4-99	ISSUED FOR PRODUCTION

REV.	DATE	DESCRIPTION
1	1-4-99	ISSUED FOR PRODUCTION
2	1-4-99	ISSUED FOR PRODUCTION
3	1-4-99	ISSUED FOR PRODUCTION

REV.	DATE	DESCRIPTION
1	1-4-99	ISSUED FOR PRODUCTION
2	1-4-99	ISSUED FOR PRODUCTION
3	1-4-99	ISSUED FOR PRODUCTION

REV.	DATE	DESCRIPTION
1	1-4-99	ISSUED FOR PRODUCTION
2	1-4-99	ISSUED FOR PRODUCTION
3	1-4-99	ISSUED FOR PRODUCTION

REV.	DATE	DESCRIPTION
1	1-4-99	ISSUED FOR PRODUCTION
2	1-4-99	ISSUED FOR PRODUCTION
3	1-4-99	ISSUED FOR PRODUCTION

REV.	DATE	DESCRIPTION
1	1-4-99	ISSUED FOR PRODUCTION
2	1-4-99	ISSUED FOR PRODUCTION
3	1-4-99	ISSUED FOR PRODUCTION

REV.	DATE	DESCRIPTION
1	1-4-99	ISSUED FOR PRODUCTION
2	1-4-99	ISSUED FOR PRODUCTION
3	1-4-99	ISSUED FOR PRODUCTION

REV.	DATE	DESCRIPTION
1	1-4-99	ISSUED FOR PRODUCTION
2	1-4-99	ISSUED FOR PRODUCTION
3	1-4-99	ISSUED FOR PRODUCTION

REV.	DATE	DESCRIPTION
1	1-4-99	ISSUED FOR PRODUCTION
2	1-4-99	ISSUED FOR PRODUCTION
3	1-4-99	ISSUED FOR PRODUCTION

REV.	DATE	DESCRIPTION
1	1-4-99	ISSUED FOR PRODUCTION
2	1-4-99	ISSUED FOR PRODUCTION
3	1-4-99	ISSUED FOR PRODUCTION

REV.	DATE	DESCRIPTION
1	1-4-99	ISSUED FOR PRODUCTION
2	1-4-99	ISSUED FOR PRODUCTION
3	1-4-99	ISSUED FOR PRODUCTION

REV.	DATE	DESCRIPTION
1	1-4-99	ISSUED FOR PRODUCTION
2	1-4-99	ISSUED FOR PRODUCTION
3	1-4-99	ISSUED FOR PRODUCTION

REV.	DATE	DESCRIPTION
1	1-4-99	ISSUED FOR PRODUCTION
2	1-4-99	ISSUED FOR PRODUCTION
3	1-4-99	ISSUED FOR PRODUCTION

REV.	DATE	DESCRIPTION
1	1-4-99	ISSUED FOR PRODUCTION
2	1-4-99	ISSUED FOR PRODUCTION
3	1-4-99	ISSUED FOR PRODUCTION

REV.	DATE	DESCRIPTION
1	1-4-99	ISSUED FOR PRODUCTION
2	1-4-99	ISSUED FOR PRODUCTION
3	1-4-99	ISSUED FOR PRODUCTION

REV.	DATE	DESCRIPTION
1	1-4-99	