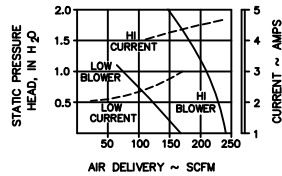
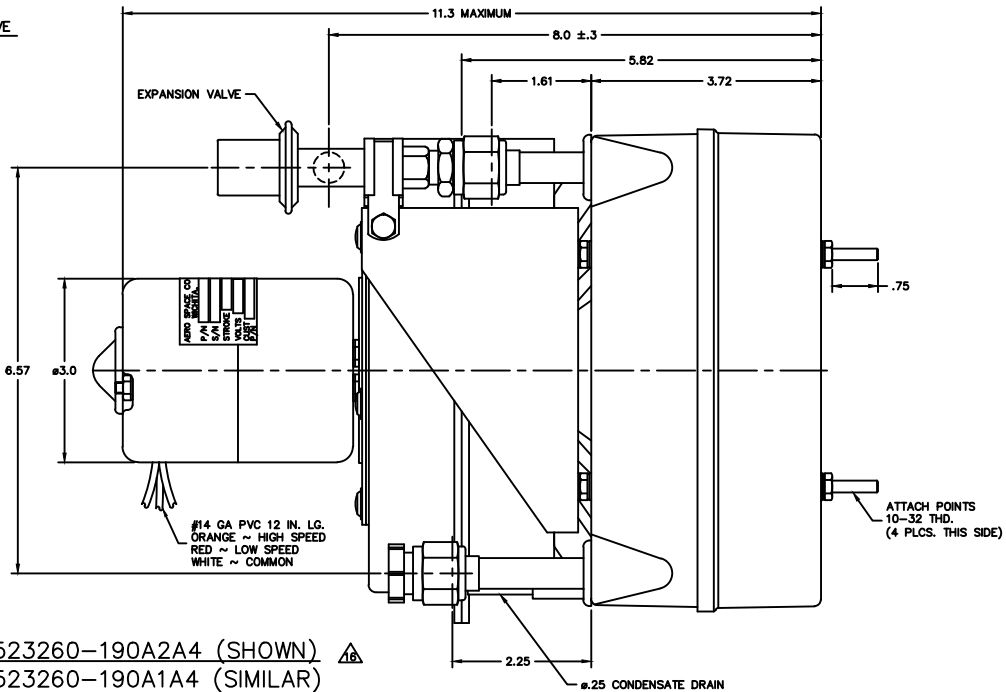
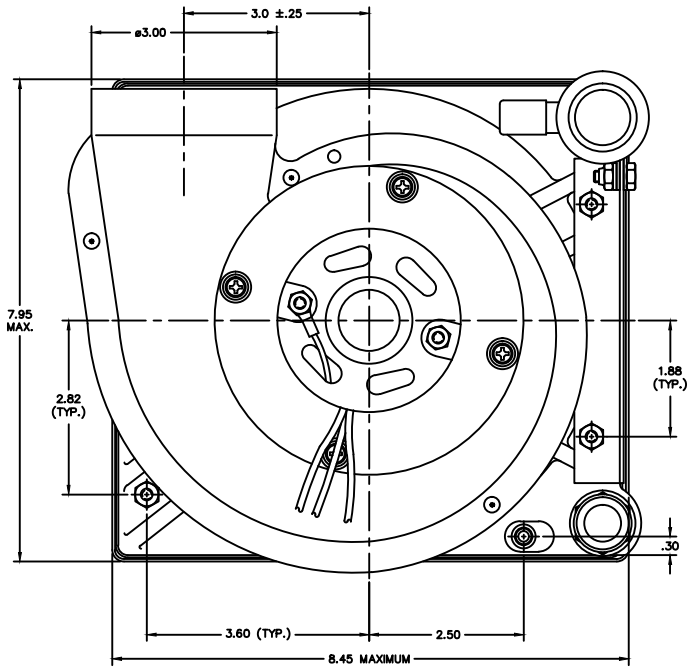


— NOTICE —
 This drawing is a part of the proprietary article therein disclosed, and all design, manufacturing, reproduction, use, patent rights, and other rights regarding the same are expressly reserved by Aero Space Controls Corporation, Wichita, Kansas. It is submitted under a confidential relationship for a specific purpose and shall not be disclosed to any unauthorized person or incorporated in any other projects.



PERFORMANCE CURVE



1523260-190A2A4 (SHOWN) Δ
 1523260-190A1A4 (SIMILAR)

NOTES CONTINUED:

7. MODULE CAPACITY: 6000 BTUH AT 150 CFM 80°F INLET AIR, 180 PSIG 100°F INLET FREON, 44 PSIG OUTLET FREON.
 : 8000 BTUH AT 185 CFM 103°F INLET AIR, 200 PSIG 110°F INLET FREON, 44 PSIG OUTLET FREON.
8. ELECTRICAL POWER: 27VDC AND 110 WATTS
9. BLOWER CAPACITY: SEE GRAPH
10. MODULE WEIGHT: 8.5 LBS.
11. PRESSURES MAXIMUM: OPERATING: 300 PSIG
 PROOF: 450 PSIG
 BURST: 550 PSIG
12. MAXIMUM COIL LEAKAGE OF R-12 REFRIGERANT AT 300 PSIG IS 1 OZ. IN 2 YEARS
13. EVAPORATOR HAS A CORROSION RESISTANT FINISH
14. EXPANSION VALVE ADJUSTABLE TO 50 PSIG SUCTION PRESSURE
15. EVAPORATOR HAS A TWO SPEED MOTOR

Δ REFERENCE ASSEMBLY DRAWING 1523261-1. FOR INFORMATION PURPOSES THE 1523260-190A2A4 HAS THE EXPANSION VALVE INLET ORIENTED AS SHOWN (9 O'CLOCK). THE 1523260-190A1A4 SIMILAR HAS THE EXPANSION VALVE INLET ORIENTED DOWN (6 O'CLOCK).

REVISIONS				
C.O. NO.	REV.	REVISION DESCRIPTION	DATE	APPD.
ASC1759	L	REDRAWN TO CAD. ADDED PERFORMANCE CURVE. SEE ECO FOR DIMENSION CHANGES.	12-15-00	D.S.
ASC4010	M	ADDED -115A2A4 CONFIG. TO NEW SHT. (7). ADDED -215C4A4 CONFIG. TO NEW SHT. (8).	7-25-05	D.S.
ASC4509	N	ADDED FLAGNOTE (16) TO EA. SHT. IN REF. TO LISTING THE APPLICABLE ASS'Y. DWG. No.	3-21-08	D.S.
ASC4738	P	ON EACH OUTLINE DRAWING ADD DETAILING OF THE SPACING WASHERS TO COMPLY WITH REVISION 'S' TO THE CORRESPONDING 1523261 ASS'Y. DWG.	2-4-10	D.S.

QTY.	ITEM	SIZE	PART NUMBER	DESCRIPTION	MATERIAL	MAT'L. SPEC.	FINISH	FINISH SPEC.
LIST OF MATERIALS								
DIMENSIONAL SYMBOLS PER ASME: Y14.5				UNLESS OTHERWISE SPECIFIED		SIGNATURES		DATE
▽ FLATNESS — STRAIGHTNESS ∠ ANGULARITY ⊥ PERPENDICULARITY // PARALLELISM ⊙ CONCENTRICITY ⊕ TRUE POSITION ○ CIRCULARITY (ROUNDNESS) = SYMMETRY Ⓜ (MMC) MAXIMUM MATERIAL CONDITION Ⓢ (RFS) REGARDLESS OF FEATURE SIZE				1. DIMENSIONS ARE IN INCHES — TOLERANCES ON — FRACTIONS ± 1/16 ANGLES ±0° 30' XX DEC ±.030 DRILL HOLES AND 10387 XXX DEC ±.010		DR. D. SIMON CHK. ENGR.		12-15-00
				2. SURFACE ROUGHNESS PER MIL-STD-10		APPD.		
				3. REMOVE BURRS & BREAK SHARP EDGES .010 MAX.		NEXT ASSY:		
				4. INTERNAL RADII .005 TO .015		6. ALL DIMENSIONS BEFORE PLATING		
				5. STRAIGHT SCREW MIL-S-7742 TAPERED PIPE MIL-P-7105		THREADS PER MIL-STD-10		
DO NOT SCALE DRAWING						CODE IDENT NO.		SIZE
						D		DWG NO.
						1523260		
						SCALE 1:1		UNIT WT LBS
						SHT 1 OF 8		

AERO SPACE CONTROLS CORPORATION
 WICHITA, KANSAS

TITLE
 EVAPORATOR
 MODULE

DWG NO. 1523260