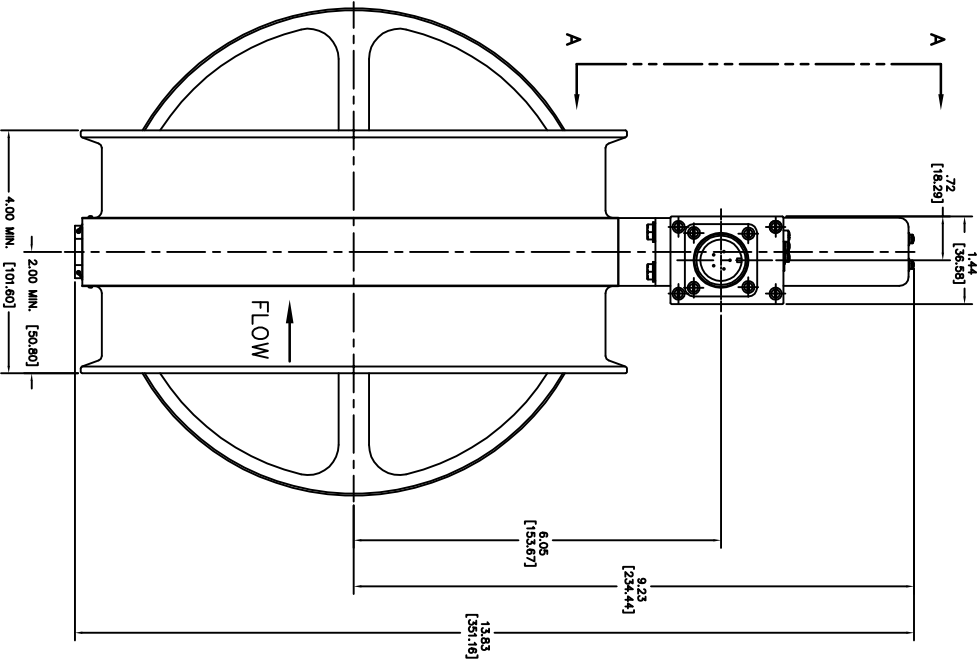


NOTICE  
 This drawing is a part of the proprietary design, strength, and construction of the Aero Space Controls Corporation, and is not to be used, copied, or reproduced in any form without the written consent of Aero Space Controls Corporation. The use of this drawing for any other project is prohibited by law.



-1 PLAN VIEW

- NOTES CONTINUED:  
 7. SPECIFICATIONS AS FOLLOWS:  
 -OPERATING TEMPERATURE: -4°F TO 212°F [-20°C TO +100°C]  
 -OPERATING PRESSURE: 1/4 PSI [12 KPa]  
 -FRONT PRESSURE: 2.61 PSI [18 KPa]  
 -NOMINAL AIRFLOW RATE: 1.22 [38 KPa]  
 -INTERNAL LEAKAGE: 6.35 SCFM @ 2.61 PSI INLET [3 L/s]  
 -PRESSURE DROP: TBD  
 -OPERATING CURRENT: 17 SECONDS MAXIMUM  
 -OPEN/CLOSE (28V): 17 SECONDS MAXIMUM  
 -NOMINAL VOLTAGE: 27.0 TO 30.3 VDC  
 -MAXIMUM CURRENT: 0.4 AMPS AT 28V  
 -INTERPRETED SWITCHES: 1.0 A MINIMUM  
 -CUSTOMER SPECIFICATION No.: 4079821211-301

QTY.	ITEM SIZE	PART NUMBER	VALVE/ACTUATOR OUTLINE	DESCRIPTION	MATERIAL	FINISH	FINISH SPEC.
		-1					

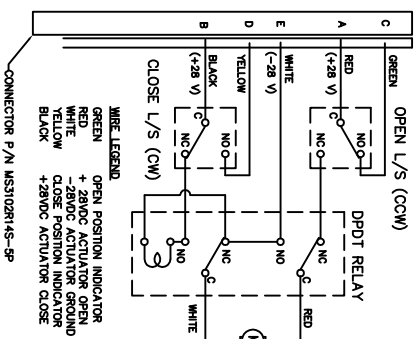
DIMENSIONAL SYMBOLS PER UNLESS OTHERWISE SPECIFIED		TOLERANCES ARE IN INCHES	
□ FLATNESS	1/4, 3	1. DIMENSIONS ARE IN INCHES	±.0005
— STRAIGHTNESS	1/4, 3	— TOLERANCES ON —	±.0005
∠ ANGULARITY	1/4, 3	— ANGLES	±.0005
⊥ PERPENDICULARITY	1/4, 3	— DRILL HOLES	±.0005
∥ PARALLELISM	1/4, 3	— AND 10397	±.010
⊙ CONCENTRICITY	1/4, 3	2. SURFACE ROUGHNESS	100
⊕ TRUE POSITION (ROUNDNESS)	1/4, 3	3. BREAK SYMBOLS	100
⊖ SYMMETRY	1/4, 3	4. INTERNAL RADIUS	100 TO .015
⊗ (MAG) MAXIMUM MATERIAL CONDITION	1/4, 3	5. STRAIGHT PIPE MIL-S-7742	100 TO .015
⊙ (RFS) REGARDLESS OF FEATURE SIZE	1/4, 3	6. ALL DIMENSIONS BEFORE PLATING	100 TO .015

LIST OF MATERIALS		
DR.	DATE	SIGNATURES
DR.	7-23-08	
CHK.		
ENGR.		
APPD.	7-30-08	DO NOT SCALE DRAWING

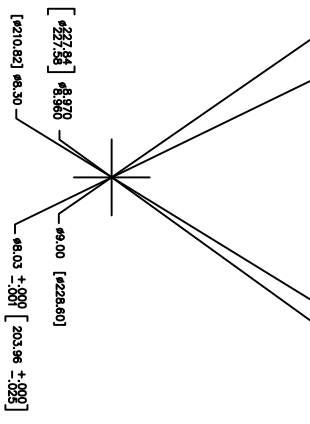
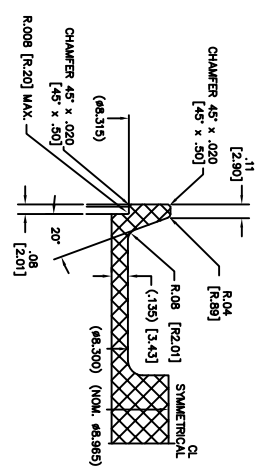
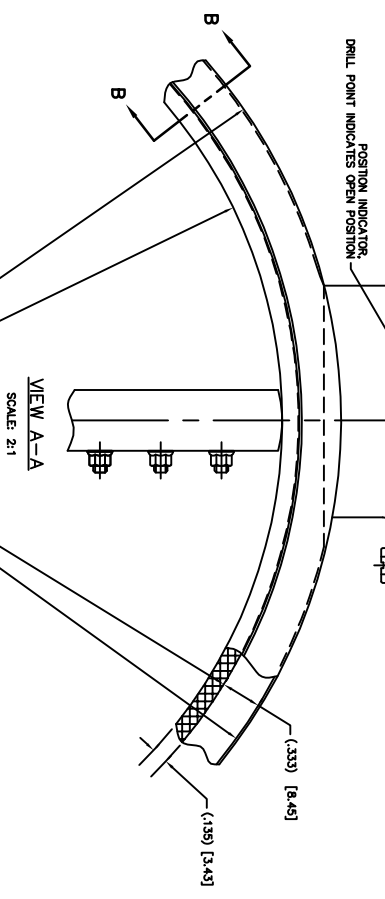
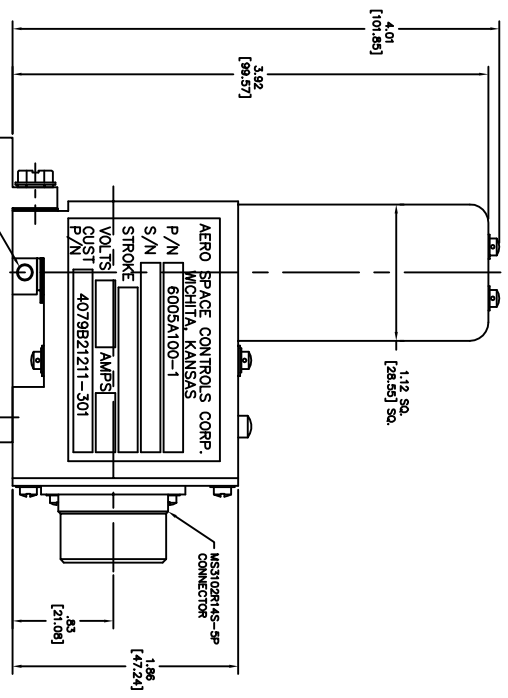
  

TITLE:	AERO SPACE CONTROLS CORPORATION
	WICHITA, KANSAS
	VALVE AND ACTUATOR
	- OUTLINE -
CODE IDENT No. SIZE	DWG. No. 6005A100
SCALE: 1:1	UNIT: WT. LBS. SHT. 1 OF 2



CO. NO.	REV.	REVISION DESCRIPTION	DATE	APPRO.
AS04571	A	REWORK DESIGN Y WITH VARIED SIZE PART CHANGES AND ASSEMBLY CHANGES	8-18-08	D.S.

NOTICE  
 This drawing is a part of the proprietary design, strength, and construction of the Aero Space Controls Corporation, and is the property of Aero Space Controls Corporation. It is to be used only for the purpose intended and is not to be reproduced, copied, or transmitted in any form or by any means, electronic, mechanical, or otherwise, without the prior written permission of Aero Space Controls Corporation. The Aero Space Controls Corporation is not responsible for any errors or omissions in this drawing, and is not to be held liable for any damages, including consequential damages, arising from the use of this drawing.



QTY.	ITEM SIZE	PART NUMBER	VALVE/ACTUATOR OUTLINE	DESCRIPTION	MATERIAL	MAT'L. SPEC.	FINISH	FINISH SPEC.
		-1						

DIMENSIONAL SYMBOLS PER ASME Y14.5		UNLESS OTHERWISE SPECIFIED	
□	FLATNESS	T1.	DIMENSIONS ARE IN INCHES
—	STRAIGHTNESS	—	TOLERANCES ON —
⊥	ANGULARITY	XX DEC ±.030	FRACTIONS ± 1/16
∥	PERPENDICULARITY	XX DEC ±.010	DRILL HOLES
∥	PARALLELISM	AND 10397	AND 10397
⊙	CONCENTRICITY	2.	SURFACE ROUGHNESS
⊕	TRUE POSITION	3.	REPLACE DIMENSION WITH BREAK
⊖	CIRCULARITY (ROUNDEDNESS)	4.	INTERNAL RADIUS .005 TO .015
⊗	SYMMETRY	5.	STRAIGHT PITCH MIL-S-7742
⊘	(MAGN.) MAXIMUM MATERIAL CONDITION	6.	TAPERED PITCH MIL-P-7105
⊙	(RFS) REGARDLESS OF FEATURE SIZE		

LIST OF MATERIALS		SIGNATURES		DATE	
DR.	D. ORTH	7-23-08			
CHK.					
ENGR.					
APPR.	DON SIMON	7-30-08			
NEXT ASSY:					
6. ALL DIMENSIONS BEFORE PLATING					

TITLE:		CODE IDENT. NO. SIZE	DWG. NO.
VALVE AND ACTUATOR		D	6005A100
— OUTLINE —		SCALE: 2:1	UNIT: WT. LBS.
		SHT. 2	OF 2

CO. NO.	REV.	REVISION DESCRIPTION	DATE	APPRO.
6005A100	A	SEE SHEET 1 FOR REVISIONS	9-19-08	D.S.