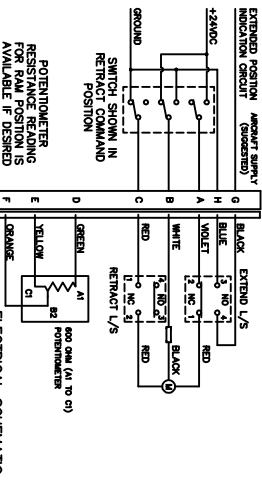


NOTICE
This drawing is a part of the proprietary design, and the design is the property of the manufacturer. It is not to be used, copied, or reproduced in any form without the written permission of the manufacturer. The manufacturer assumes no responsibility for any errors or omissions in this drawing. The manufacturer reserves the right to make changes in the design without notice. The manufacturer is not responsible for any damage or injury resulting from the use of this drawing. The manufacturer is not responsible for any loss of profit or business resulting from the use of this drawing. The manufacturer is not responsible for any other consequences resulting from the use of this drawing.

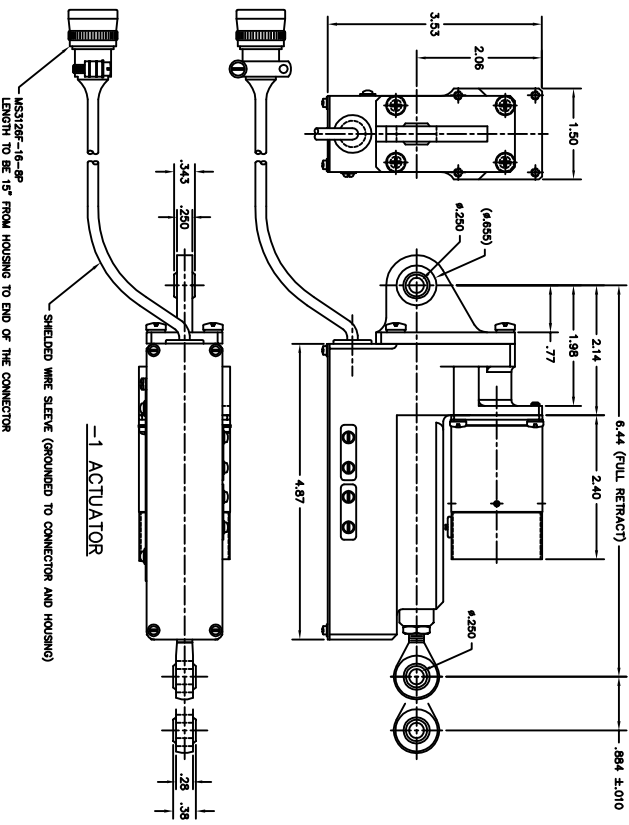


WIRE LEGEND:
A. VIOLET: EXTEND L/S/MOTOR +24VDC ACTUATOR EXTEND COMMAND
B. WHITE: MOTOR SUPPLY
C. RED: RETRACT L/S/MOTOR GROUND ACTUATOR RETRACT COMMAND
D. GREEN: EXTEND POSITION INDICATOR
E. YELLOW: RETRACT POSITION INDICATOR
F. ORANGE: WIPER (VARIABLE POSITION)
G. BLACK: FULLY EXTENDED POSITION INDICATOR
H. BLUE: GROUND FOR EXTEND POSITION INDICATOR

ACTUATOR PERFORMANCE TABLE		
LOAD	STROKE	TIME
LBS.	INCH	SECONDS
260	0.88	3.50-4.25
700	0.88	4.00-5.00

NOTES CONTINUED:

7. TO RETRACT: +24VDC TO PIN 'B' (WHITE)
GROUND TO PIN 'C' (RED)
TO EXTEND: +24VDC TO PIN 'A' (VIOLET)
GROUND TO PIN 'B' (WHITE)
8. NORMAL OPERATING LOAD: 260 LBS.
9. MAXIMUM OPERATING LOAD: 700 LBS.
10. MAXIMUM AMP DRAIN: 8.0 AMPS
11. WEIGHT: 1.8 LBS. MAXIMUM



REVISIONS		
CO. NO.	REV.	REVISION DESCRIPTION
ASC4493	A	REVISED HOUSING GEOMETRY LEFT OF MOTOR FLANGE, CORRECT L.S. THK. OF 200811-1 END NOW (4.00) SH. SHT. IS 'D' WAS 'C'. SEE EDC-8
ASC4493	B	UPDATE SYMBOLIC & F.O.D. REMAINING SEE EDC-8
ASC4443	C	CONNECTOR CALLOUT TO 'WIPER' REMAIN. +28VDC CALLOUTS TO +24VDC CALLOUTS (PARENT). REMAIN. NOTES CONTINUED. AS REQUESTED.
ASC4493	D	IN SCHEMATIC AT POTENTIOMETER 'B2' WAS 'B1'
DATE	APPRO.	
9-5-07	D.S.	
10-12-07	D.S.	
11-21-07	D.S.	

QTY. / ITEM SIZE		PART NUMBER	DESCRIPTION	MATERIAL	MAT'L. SPEC.	FINISH	FINISH SPEC.
		-1	SPOILER ACTUATOR				
LIST OF MATERIALS							
DIMENSIONAL SYMBOLS PER ASME Y14.5		UNLESS OTHERWISE SPECIFIED		SIGNATURES		DATE	
- FLATNESS		TOLERANCES ARE IN INCHES - TOLERANCES ON -		DR. D. ORTH		8-23-07	
- STRAIGHTNESS		FRACTIONS ± 1/16 ANGLES		CHK.			
- ANGULARITY		XX DEC ±.050 DRILL HOLES		ENGR. W. DEGNAN		6-7-07	
- PERPENDICULARITY		XX DEC ±.010 AND 10387		APPD. DON SIMON		8-23-07	
- PARALLELISM		2. SURFACE ROUGHNESS					
- CONCENTRICITY		3. REMOVE BURRS AND BREAK SHARP EDGES .010 MAX.					
- TRUE POSITION		4. INTERNAL RADIUS .005 TO .015					
- CIRCULARITY (ROUNDNESS)							
- SYMMETRY							
- MAXIMUM MATERIAL CONDITION (RFS) REGARDLESS OF FEATURE SIZE		5. STRAIGHT PITCH MIL-P-7742 TAPERED PITCH MIL-P-7105					
		6. ALL DIMENSIONS BEFORE PLATING					
		DO NOT SCALE DRAWING		SCALE 1:1		UNIT WT	LBS
						SHT 1	Of 1

AERO SPACE CONTROLS CORPORATION
MORTA, KANSAS
SPOILER
ACTUATOR

DWG NO. 2008A100