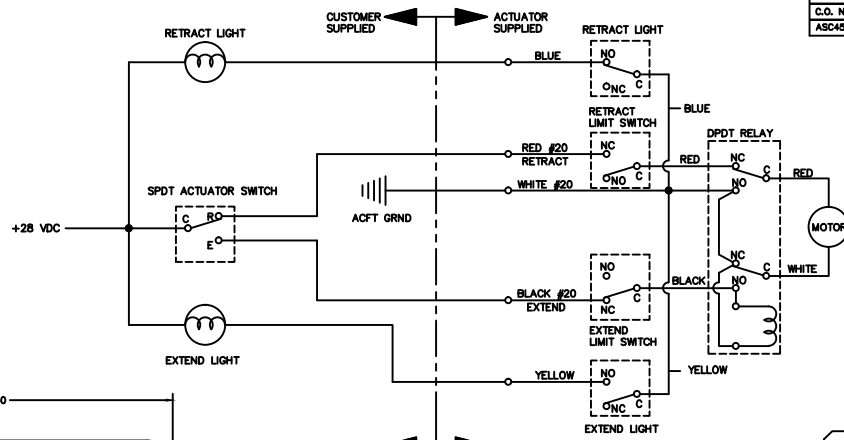
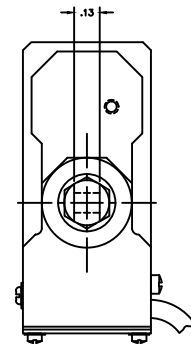
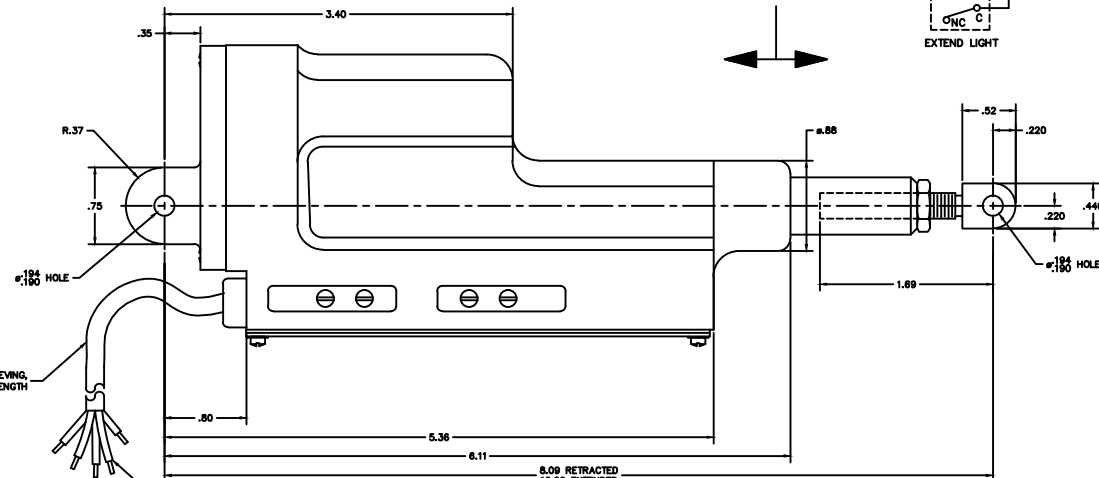
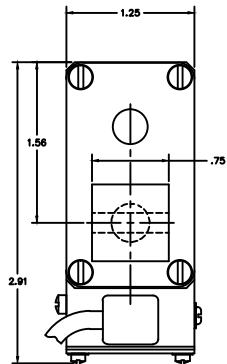


NOTICE
 This drawing is a part of the proprietary article therein disclosed and all design, manufacturing, reproduction, use, patent rights, and other rights regarding the same are expressly reserved by Aero Space Controls Corporation. No disclosure, copying, or reproduction is permitted without the written consent of Aero Space Controls Corporation. This drawing is submitted under a confidential relationship for a specific purpose and shall not be disclosed to any unauthorized person or incorporated in any other projects.

| REVISIONS | | | | |
|-----------|------|---|---------|-------|
| C.O. NO. | REV. | REVISION DESCRIPTION | DATE | APPD. |
| ASC4501 | A | WIRE/SLEEVING NOTATIONS UPDATED. SEE ECD. | 2-28-08 | D.S. |



ELECTRICAL SCHEMATIC
 SHOWN IN RETRACT POSITION



NOTES CONTINUED:

- 7. WIRE PER MIL-W-5086
- 8. VOLTAGE: 28 VDC
- △ EYE BOLT ADJUSTMENT: ±.40
- 10. TOTAL STROKE SET WITH L/S: 1.91 IN. AVAILABLE STROKE: 3.37 IN.
- 11. STATIC TENSION LOAD: 500 LBS. MAXIMUM OPERATIONAL LOAD: 110 LBS. NOMINAL - 150 LBS. MAXIMUM
- 12. MAXIMUM CURRENT: 2.0 AMPS WITH 50 LB. LOAD.
- 13. WEIGHT: 1.4 LBS.
- 14. MAXIMUM CYCLE TIME: 50 SECONDS
- 15. ALL FASTENERS AND ASSEMBLY JOINTS SHALL BE SEALED TO PREVENT MOISTURE FROM ENTERING THE ACTUATOR
- 16. FOR ASSEMBLY SEE 1092301-25 DRAWING SHEET AS APPLICABLE TO THAT MUTI-SHEET DRAWING SERIES

| QTY. | ITEM | SIZE | PART NUMBER | DESCRIPTION | MATERIAL | MAT'L. SPEC. | FINISH | FINISH SPEC. |
|---|------|------|-------------|--|----------|---|---------|--------------|
| LIST OF MATERIALS | | | | | | | | |
| DIMENSIONAL SYMBOLS PER ASME Y14.5 | | | | UNLESS OTHERWISE SPECIFIED | | SIGNATURES | | DATE |
| ▭ FLATNESS — STRAIGHTNESS < ANGULARITY ⊥ PERPENDICULARITY // PARALLELISM ⊙ CONCENTRICITY ⊕ TRUE POSITION ○ CIRCULARITY (ROUNDNESS) ≡ SYMMETRY Ⓜ (MMC) MAXIMUM MATERIAL CONDITION Ⓡ (RFS) REGARDLESS OF FEATURE SIZE | | | | 1. DIMENSIONS ARE IN INCHES - TOLERANCES ON - FRACTIONS ± 1/16 ANGLES ±0° 30' XX DEC ±.030 DRILL HOLES AND 10387 XXX DEC ±.010 | | DR. D. ORTH CHK. ENGR. | | 10-18-06 |
| | | | | 2. SURFACE ROUGHNESS PER MIL-STD-10 | | APPD. S. AXTELL | | 10-18-06 |
| | | | | 3. REMOVE BURRS & BREAK SHARP EDGES .010 MAX. | | NEXT ASSY: | | |
| | | | | 4. INTERNAL RADII .005 TO .015 | | 6. ALL DIMENSIONS BEFORE PLATING | | |
| | | | | 5. STRAIGHT SCREW MIL-S-7742 TAPERED PIPE MIL-P-7105 | | DO NOT SCALE DRAWING | | |
| AERO SPACE CONTROLS CORPORATION WICHITA, KANSAS | | | | | | TITLE ACTUATOR ASSEMBLY OUTLINE | | |
| | | | | | | CODE IDENT NO. | SIZE | DWG NO. |
| | | | | | | | D | 2007-0015 |
| | | | | | | SCALE 2:1 | UNIT WT | LBS |
| | | | | | | | | SHT 1 OF 1 |