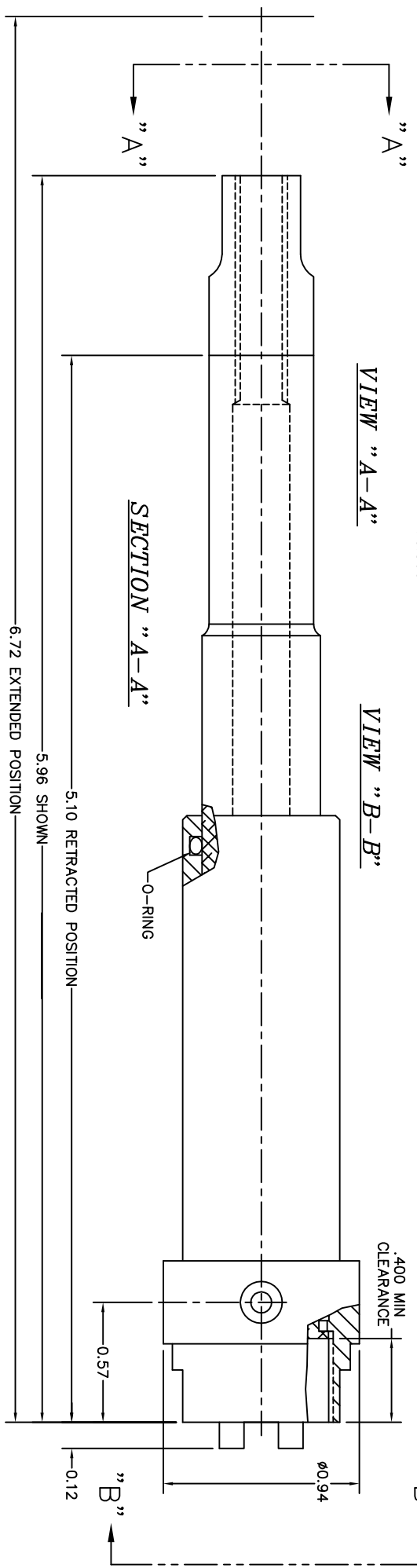
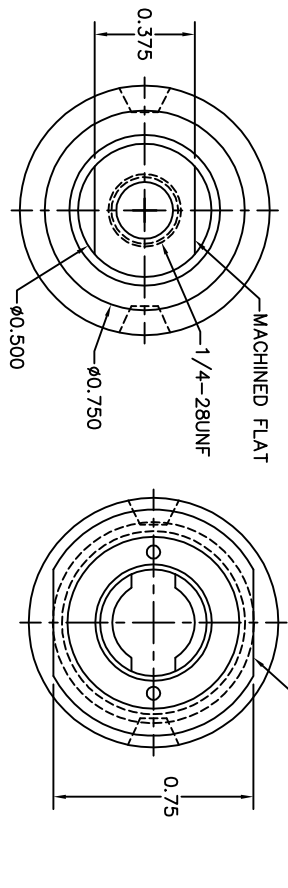


— NOTICE —
 This drawing is a part of the proprietary article therein disclosed, and all design, manufacturing, reproduction, use, patent rights, and sales rights regarding the same are expressly reserved by Aero Space Controls Corporation. No part of this drawing or its contents shall not be disclosed to any unauthorized person or incorporated in any other projects.

REVISIONS				
C.O. NO.	REV.	REVISION DESCRIPTION	DATE	APPD.
ASCI984	E	ADDED: (-3) CONFIG: O-RING GROOVE TO SLEEVE I.D. WITH O-RING BETWEEN SLEEVE/SHAFT TO SEAL OUT EXTERNAL CONTAMINATION. SHAFT MATL. NOW SS.	10-25-01	D.S.



QTY	ITEM	SIZE	PART NUMBER	DESCRIPTION	MATERIAL	MATL SPEC	FINISH	FINISH SPEC
	B	-3						

LIST OF MATERIAL					
SIGNATURES	DATE	AERO SPACE CONTROLS CORPORATION WICHITA, KANSAS			
DR. Daniel Simon	10-25-01	ACTUATOR			
CHK.					
ENGR. Don Simon	10-25-01				
APPR.		FSCM	SIZE	DWG. NO.	2005A100
APPR.		SCALE	2:1	UNIT WT.	LB SHT 2 OF 2

DIMENSIONAL SYMBOLS PER MIL-STD-88		UNLESS OTHERWISE SPECIFIED	
—	FLATNESS & STRAIGHTNESS	1. DIMENSIONS ARE IN INCHES.	TOLERANCES ON FRACTIONS ±1/16 ANGLES ±0.30°
⊥	PERPENDICULARITY	.XX DEC ±.000	DRILL HOLES
∥	PARALLELISM	SIZE DEC ±.010	RND UNLESS
⊙	CONCENTRICITY	2. MIL-STD-10	ROUGHNESS PER
⊕	TRUE POSITION	3. REMOVE BURRS & BREAK SHARP EDGES .010 MAX.	
⊖	ROUNDNESS	4. INTERNAL RADI 0.05 TO .015	
⊗	SYMMETRY	5. THREADS STRAIGHT SREW MIL-S-7742 TAPERED PIPE MIL-S-7706	
⊘	MAXIMUM MATERIAL CONDITION (MMC)	6. ALL DIMENSIONS BEFORE FLATTING	
⊙	REGARDLESS OF FEATURE SIZE (RFS)		

—3

DO NOT SCALE DRAWING