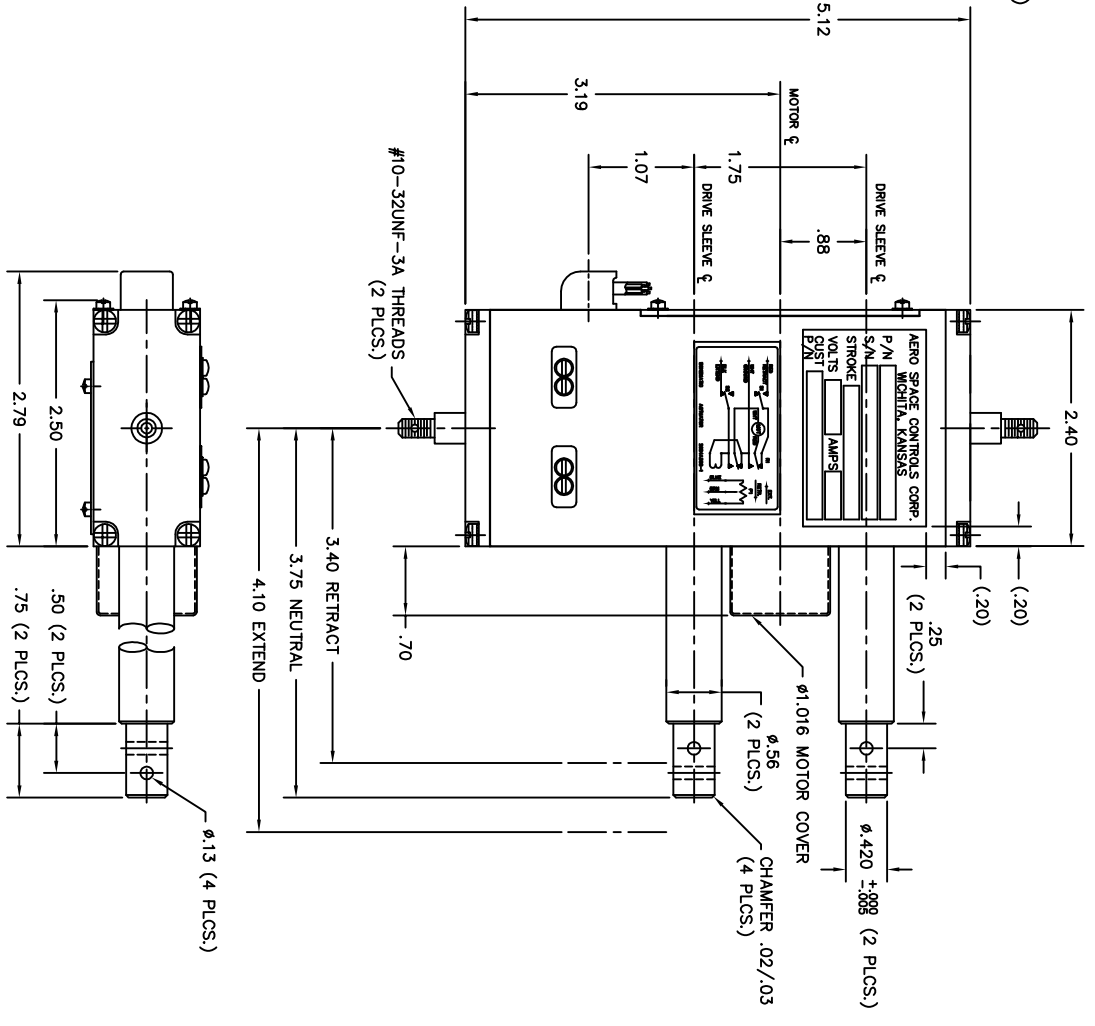
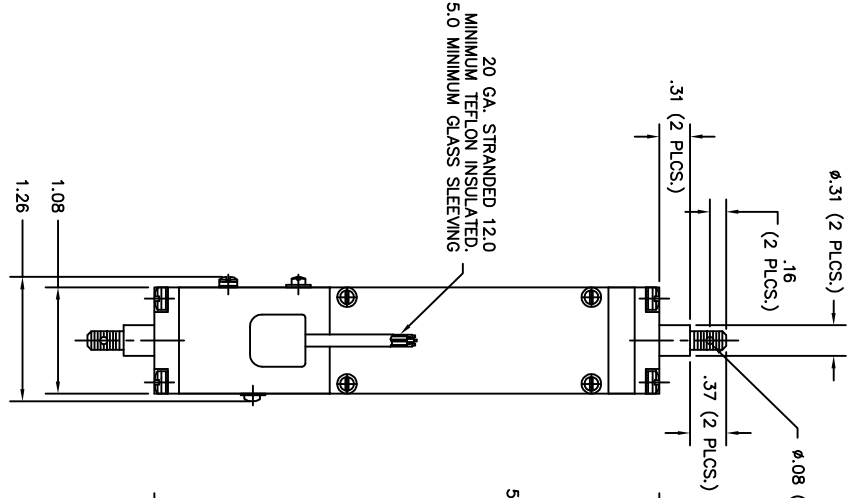
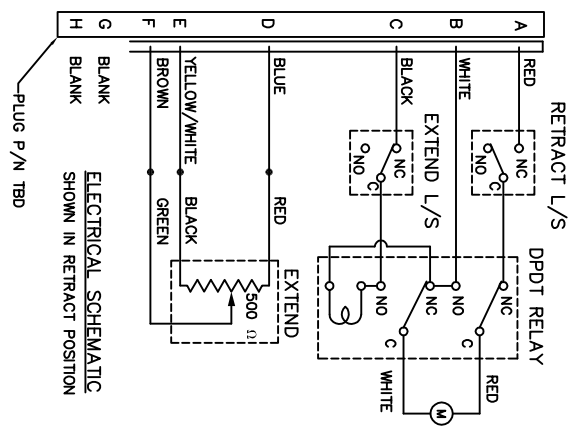


NOTICE - This drawing is a part of the proprietary article therein, and its design, manufacture, production, distribution, sale, use, or operation in any form, or the disclosure of its contents, in any manner, is expressly reserved by Aero Space Controls Corporation, Wichita, Kansas. It is submitted under a license to the recipient and shall not be disclosed or incorporated in any other projects.



REVISIONS		DATE	APPD
C.O. NO.	REV.	REVISION DESCRIPTION	
ASC4261	A	NOTE (13) IS '1.5 LB. MAXIMUM' WAS 'TBD'	1-17-07 S.A.
ASC4361	B	DETAIL NAMEPLATE AND SCHEMATIC PLATE	7-18-07 D.S.

- NOTES CONTINUED:
- VOLTAGE: 24/28 VDC
 - MAXIMUM CURRENT: TBD
 - ULTIMATE STATIC LOAD: 205 LBS.
 - LIMIT LOAD (MAXIMUM OPERATIONAL): 117.5
 - NOMINAL OPERATING LOAD: 78.3 LBS.
 - STROKE LENGTH: .70 ± 0.03 IN.
 - TARGET SPEED: .035 IN./SEC. AT 50 LB. LOAD
 - AMBIENT OPERATING TEMPERATURE: -40°F TO +160°F
 - WEIGHT: 1.5 LB. MAXIMUM
 - SEE ASC DRAWING 2004A301 FOR ASSEMBLY REQUIREMENTS

QTY.	ITEM SIZE	PART NUMBER	DESCRIPTION	MATERIAL	MATL. SPEC.	FINISH	FINISH SPEC.
		-1	DUAL RAM ACTUATOR				

DIMENSIONAL SYMBOLS PER ASME Y14.5		UNLESS OTHERWISE SPECIFIED		LIST OF MATERIALS	
FLATNESS	ANGLES	DRAWING	DATE		
STRAIGHTNESS	FRACTIONS ± 1/16	DR.	D. ORTH	8-29-06	
ANGULARITY	TOLERANCES ON	CHK.			
PERPENDICULARITY	XXX DEC ± 0.00	ENGR.			
PARALLELISM	DRILL HOLES	APPD.	S. AXTELL	8-29-06	
CONCENTRICITY	Z SURFACE ROUGHNESS				
TRUE POSITION	PER MIL -SD-10				
SYMMETRY	REMOVE BURRS & BREAK SHARP EDGES .010 MAX.				
	INTERNAL RADII .005 TO .015				
	THREADS				
	STRAIGHT SCREW MIL-S-7742				
	TAPERED PIPE MIL-P-7105				

TITLE		CODE IDENT NO.	DWG NO.
AERO SPACE CONTROLS CORPORATION WICHITA, KANSAS			2004A300
DUAL RAM ACTUATOR			

SCALE	UNIT	WT	LBS	SHT	OF
1:1	C			1	1