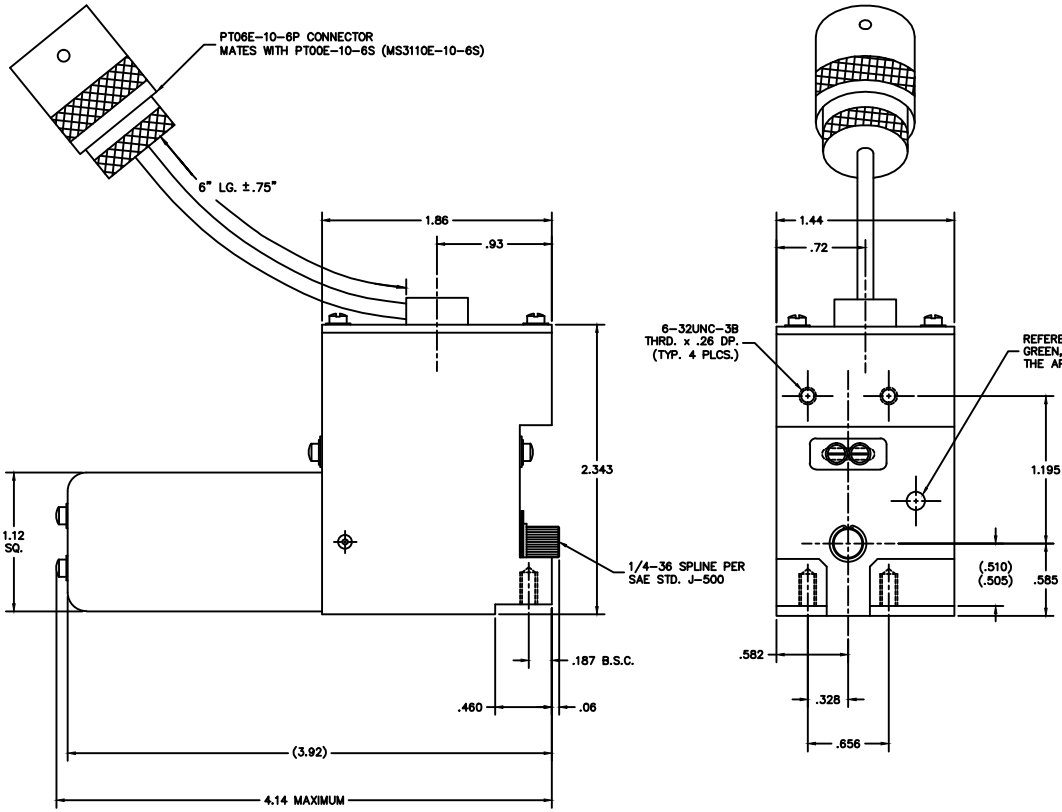
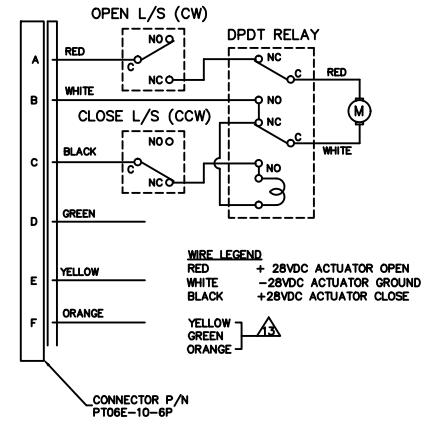


- NOTICE -
 This drawing is a part of the proprietary article therein disclosed, and all design, manufacturing, reproduction, use, patent rights, and other rights regarding the same are expressly reserved by Aero Space Controls Corporation, Wichita, Kansas. It is admitted under a confidential relationship for a specific purpose and shall not be disclosed to any unauthorized person or incorporated in any other projects.

| REVISIONS | | | | |
|-----------|------|---------------------------|---------|-------|
| C.O. NO. | REV. | REVISION DESCRIPTION | DATE | APPD. |
| ASC4821 | N | SEE SHEET 1 FOR REVISIONS | 3-18-11 | D.S. |



-29 CONFIGURATION



-29 ELECTRICAL SCHEMATIC

(SHOWN IN OPEN POSITION)

- FOR DRAFTING PURPOSES THIS SCHEMATIC HAS BEEN GROUPED -

- NOTES CONTINUED:
- VOLTAGE: 18-30 VOLTS
 - STALL CURRENT: 2.0 AMPS MAXIMUM
 - RUNNING CURRENT: .4 AMPS MAXIMUM
 - DUTY CYCLE: CONTINUOUS OR INTERMITTENT
 - TIMING PER CYCLE (270°): 15 SECONDS MINIMUM
 25 SECONDS MAXIMUM
 - SEE APPROPRIATE 1619101 DRAWING SHEET 1-7 FOR ASSEMBLY

CONNECTION OF THE GREEN, YELLOW AND ORANGE WIRES TO BE COMPLETED AT THE NEXT ASSEMBLY

| -29 | | ROTARY ACTUATOR | | | | | | | |
|--|------|--|-------------|----------------------------------|----------|--------------|--------|--|--|
| QTY. | ITEM | SIZE | PART NUMBER | DESCRIPTION | MATERIAL | MAT'L. SPEC. | FINISH | FINISH SPEC. | |
| LIST OF MATERIALS | | | | | | | | | |
| DIMENSIONAL SYMBOLS PER ASME Y14.5 | | UNLESS OTHERWISE SPECIFIED | | SIGNATURES | | DATE | | AERO SPACE CONTROLS CORPORATION WICHITA, KANSAS ROTARY ACTUATOR CODE IDENT No. D DWG. No. 1619T100 SCALE: 2:1 UNIT WT. LBS. SHT. 4 OF 5 | |
| 1. DIMENSIONS ARE IN INCHES - TOLERANCES ON - | | FRACTIONS ± 1/16 ANGLES XX DEC ±.030 DRILL HOLES AND 10387 | | DR. D. ORTH | | 12-10-03 | | | |
| 2. SURFACE ROUGHNESS PER ASME-B46.1 | | 3. REMOVE BURRS & BREAK SHARP EDGES .010 MAX. | | CHK. | | | | | |
| 4. INTERNAL RADII .005 TO .015 | | 5. STRAIGHT SCREW MIL-S-7742 TAPERED PIPE MIL-P-7105 | | ENGR. | | | | | |
| (M) (MMC) MAXIMUM MATERIAL CONDITION (S) (RFS) REGARDLESS OF FEATURE SIZE | | | | APPD. DON SIMON | | 12-23-03 | | | |
| | | | | NEXT ASSY: | | | | | |
| | | | | 6. ALL DIMENSIONS BEFORE PLATING | | | | | |
| | | | | DO NOT SCALE DRAWING | | | | | |