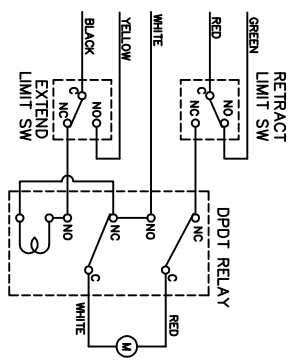
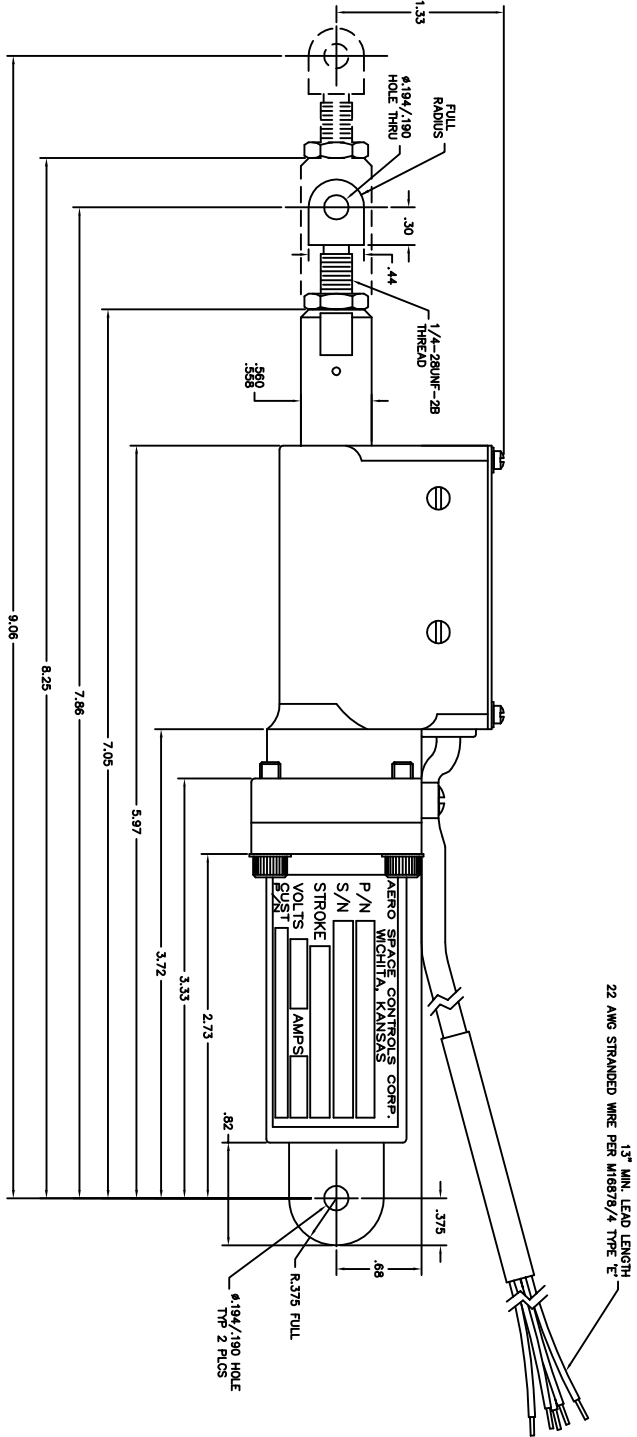
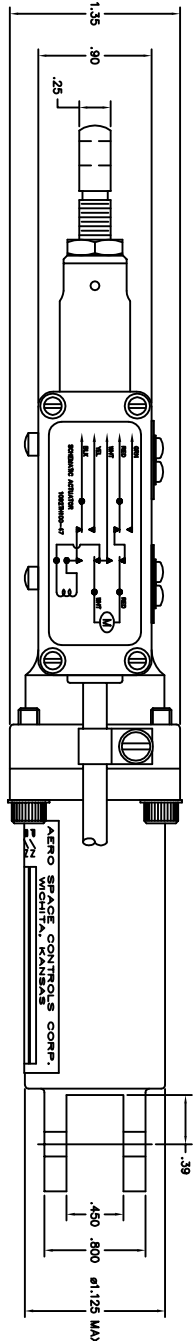
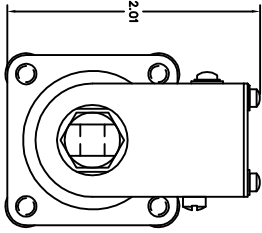


NOTICE
 This drawing is a part of the proprietary data, trade secrets, confidential information, and other confidential information of Aero Space Controls Corporation. It is intended for use only for the specific purpose for which it was prepared and is not to be distributed, copied, or otherwise used in any manner without the prior written consent of Aero Space Controls Corporation.



ELECTRIC SCHEMATIC 10927H100-47
 SHOWN IN RETRACT POSITION



-47

- NOTES CONTINUED:
 7. VOLTAGE: 24 TO 28 VDC
 8. AMPS: 2.0 MAX.
 9. WEIGHT: 1 LB
 10. ALL LEAD WIRES SHALL BE 22 AWG
 11. UNIT MUST BE SEALED WATERTIGHT (ALL SEAMS & JOINTS)
 12. TIME, ONE CYCLE (FULL RETRACT TO EXTEND AND BACK TO FULL RETRACT): 20 SECONDS WITH A 1.20" STROKE AND 50 LB. OPPOSING LOAD.

REV	DATE	DESCRIPTION	BY	CHKD
1	10-1-03	INITIAL DESIGN		
2	12-11-03	REVISION A: REMOVED TO CAD, DIMENSION IS .390 WAS .375.		
3	4-19-04	REVISION B: ON F.O.D. WIRE LEAD LG. CALLOUT IS 13" WAS 10"		
4	4-19-04	REVISION C: PER MIL-STD-174 TYPE E CALLOUT. DIMENSION IS 13' WAS 10'		

REV	DATE	DESCRIPTION	BY	CHKD
1	10-1-03	INITIAL DESIGN		
2	12-11-03	REVISION A: REMOVED TO CAD, DIMENSION IS .390 WAS .375.		
3	4-19-04	REVISION B: ON F.O.D. WIRE LEAD LG. CALLOUT IS 13" WAS 10"		
4	4-19-04	REVISION C: PER MIL-STD-174 TYPE E CALLOUT. DIMENSION IS 13' WAS 10'		

REV	DATE	DESCRIPTION	BY	CHKD
1	10-1-03	INITIAL DESIGN		
2	12-11-03	REVISION A: REMOVED TO CAD, DIMENSION IS .390 WAS .375.		
3	4-19-04	REVISION B: ON F.O.D. WIRE LEAD LG. CALLOUT IS 13" WAS 10"		
4	4-19-04	REVISION C: PER MIL-STD-174 TYPE E CALLOUT. DIMENSION IS 13' WAS 10'		

REV	DATE	DESCRIPTION	BY	CHKD
1	10-1-03	INITIAL DESIGN		
2	12-11-03	REVISION A: REMOVED TO CAD, DIMENSION IS .390 WAS .375.		
3	4-19-04	REVISION B: ON F.O.D. WIRE LEAD LG. CALLOUT IS 13" WAS 10"		
4	4-19-04	REVISION C: PER MIL-STD-174 TYPE E CALLOUT. DIMENSION IS 13' WAS 10'		

REV	DATE	DESCRIPTION	BY	CHKD
1	10-1-03	INITIAL DESIGN		
2	12-11-03	REVISION A: REMOVED TO CAD, DIMENSION IS .390 WAS .375.		
3	4-19-04	REVISION B: ON F.O.D. WIRE LEAD LG. CALLOUT IS 13" WAS 10"		
4	4-19-04	REVISION C: PER MIL-STD-174 TYPE E CALLOUT. DIMENSION IS 13' WAS 10'		